

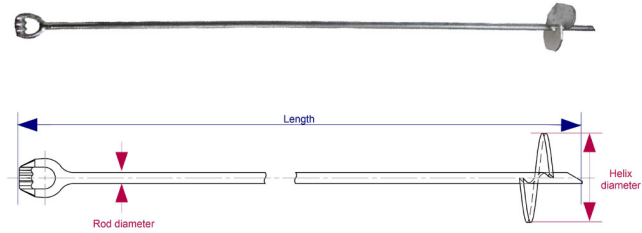
POLE LINE HARDWARE



■ Screw type anchors

Hot dip galvanized.
Screw type anchor rod are supplied with triple eye thimble.
This anchor is designed for manual installation in soil.

Code	Helix diameter (in)	Rod diameter (in)	Length (in)	Approx. weight (kg)
P-346SA	6	3/4	66	4.8
P-180 SA	8	1	66	8.7
P-11410SA (66)	10	1 1/4	66	13.6
P-11410SA	10	1 1/4	96	18.6



■ Expanding anchors

The expanding anchor is normally used with guy rods for the purpose of anchoring guy strand. The anchor is installed in an augered hole and, when expanded, the blades open and dig into undisturbed soil.
Asphalt base paint.
Anchor rod ordered separately.

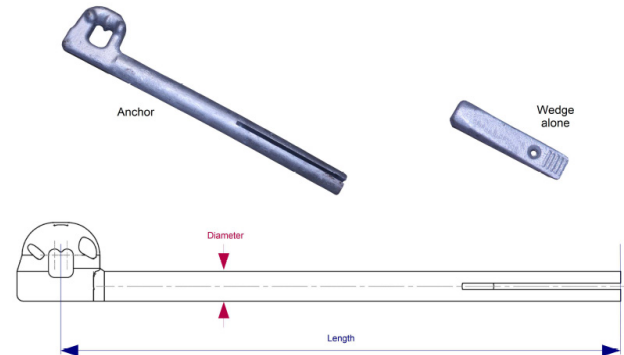
Code	Hole diameter (in)	Rod diameter (in)	Area (square in)	LBS / unit
P-135X	8	5/8 or 3/4	135	10
P-200X-3/4	10	3/4	200	20
P-200X	10	1	200	20
P-300X-1	12	1	300	33
P-300X	12	1 1/4	300	33



■ Rock anchors

This anchor is installed by drilling a hole in concrete or rock. The expansion of the end with wedge is made by driving top of the anchor with sledge. It is recommended to grout the hole with neat cement.

Code	Description	Eye type	Length (in)	Rod diameter (in)	Approx. weight (kg)
P-112RA	c/w wedge	side	12	1	2.27
P-118RA	c/w wedge	side	18	1	2.72
P-11W	wedge only	-	-	-	0.14



■ Guy clamps

Code	Number of bolts	Bolt diameter (in)	Clamping length (in)	Wire diameter range (in)	Approx. weight (kg)
P-5GC	1	1/2	1 1/2	3/16 to 3/8	0.28
P-20GC	2	1/2	3 3/8	3/16 to 3/8	0.57
P-30GC	3	1/2	4	3/16 to 7/16	0.73
P-10GC	3	1/2	6	3/16 to 7/16	1.01
P-50GC	3	5/8	6	5/16 to 1/2	1.16



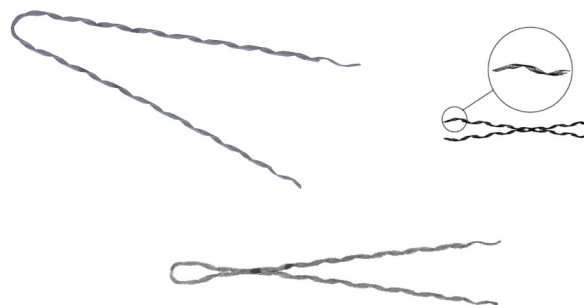
P-5GC



P-30GC

■ Performed guy grips

Code	Guy wire diameter (in)	Color code	Length (in)	Min. holding strength (lbs)	Approx. weight (kg)
P-7316GE	3/16	Red	20	3990	0.11
P-7140GE	1/4	Yellow	25	6650	0.15
P-7516GE	5/16	Black	30	11200	0.32
P-7380GE	3/8	Orange	35	15400	0.47
P-7716GE	7/16	Green	38	20800	0.73
P-7120GE	1/2	Blue	45	26900	1.15
P-7916GE	9/16	Yellow	55	35000	1.82
P-7580GE	5/8	Black	64	42400	2.27

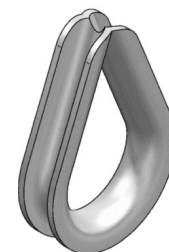
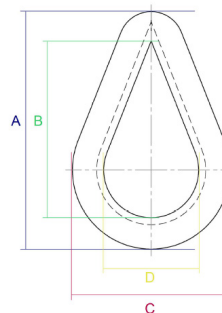


■ Guy thimbles

Made of hot dip galvanized steel.

Note that Guy Thimble do not have an established load rating and are meant to serve as guy wire protection only.

Code	Wire size	A (mm)	C (mm)	B (mm)	D (mm)	Approx. weight (kg)
P-14GT	1/4	56	38	41	22	0.03
P-516GT	5/16	64	46	48	27	0.05
P-38GT	3/8	73	52	54	28	0.10
P-716GT	7/16	83	59	60	31	0.16
P-12GT	1/2	92	69	70	37	0.23
P-916GT	9/16	92	69	70	37	0.23
P-58GT	5/8	108	79	83	44	0.34
P-34GT	3/4	129	96	95	51	0.72



■ Guy hooks and “J” hooks

Made of hot dip galvanized ductile iron, the P-1GH guy hook allows the pole to be down-guyed with the ground. It features spurs that grip into the poles in order to avoid any rotation after installation.

Made of hot dip galvanized steel, the P-2GH guy hook is used in wraparound guying of wood poles, two hooks per pole. It prevents the guy wire from slipping down when the pole is guyed at a sharp angle.

Code	Material	Hole diameter (in)	Mounting bolt (in)	Approx. weight (kg)
P-1GH	Galv. iron	13/16	5/8 or 3/4	0.68
P-2GH	Galv. steel	11/16	5/8	0.30



P-1GH



P-2GH

■ Guy wires

Hot dip galvanized.

All guy wire in stock are graded 180.

Other grades are available upon request.

Code	Material	Grade	Nominal diameter (in)	Breaking strength	Lbs/100 ft
P-78014GW	Galv. steel	Gr. 180	1/4	6400	12.90
P-78516GW	Galv. steel	Gr. 180	5/16	11100	22.20
P-78038GW	Galv. steel	Gr. 180	3/8	13500	27.00
P-78716GW	Galv. steel	Gr. 180	7/16	19500	38.80
P-78012GW	Galv. steel	Gr. 180	1/2	25500	51.70



■ Anchor plates

The anchor plate are made of hot dip galvanized steel (galv.) or in steel covered with a black asphalt paint to offer a resistance to corrosion.

Manufactured as per C.S.A standard.

Anchor rod ordered separately.

Code	Coating	Dimensions (in)	Rode diameter (in)	Area (square in)	Ultimate strength (kN)	Approx. weight (kg)
P-256P	Galv.	16 x 16	5/8 and 3/4	256	100	6.4
P-256P-P	Paint	16 x 16	5/8 and 3/4	256	100	6.4
P-400P	Galv.	20 x 20	3/4 and 1	400	160	10.3
P-400P-P	Paint	20 x 20	3/4 and 1	400	160	10.3
P-400PHQ	Paint	20 x 20	1 1/4	400	230	10.8
P-900PHQ	Paint	30 x 30	1 1/4	900	360	21.0

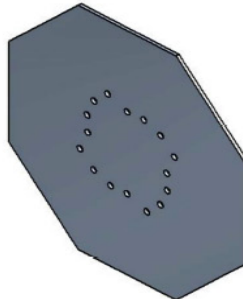


P-400P

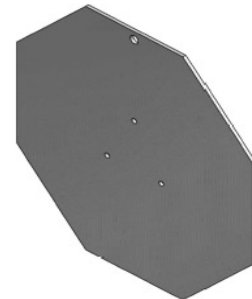
■ Pole bearing plates



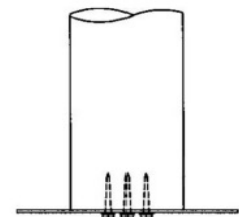
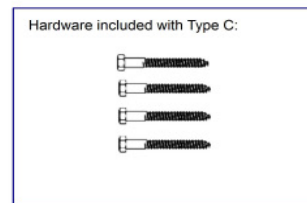
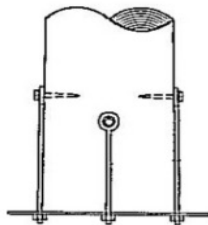
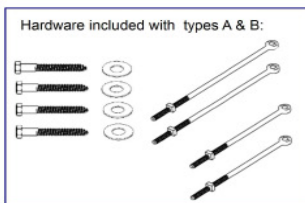
Type A



Type B



Type C



Code	Dimensions (mm)	Thickness (mm)	Type	Approx. weight (kg)
PL-AC-OCT-9.5-600	600 x 600	9.5	C	22.1
PL-AC-OCT-9.5-750	750 x 750	9.5	C	34.7
PL-AC-OCT-9.5-762	762 x 762	9.5	B	35.6
PL-AC-OCT-9.5-900	900 x 900	9.5	A	48.7
PL-AC-OCT-9.5-1200	1200 x 1200	9.5	A	87.6

Hardwares included with type A and type B plates:

- 2 straight hole eye bolts 5/8-11UNC X 16 inches with hex. nut
- 2 straight hole eye bolts 5/8-11UNC X 20 inches with hex. nut
- 4 lag bolts 5/8 X 5 inches
- 4 round washers for 5/8 lag bolts, 2 inches O.D.

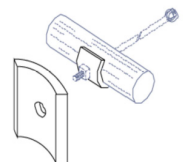
Hardwares included with type C plates:

- 4 lag bolts 5/8 X 5 inches

■ Log anchoring washers

Made of hot dip galvanized steel, this type of curved washer is used in combination with an anchor rod to guy a pole with a treated wooden log.

Anchor rod ordered separately.



Code	Dimensions (in)	Thickness (in)	Hole diameter (in)	Radius (in)	Approx. weight (kg)
P-9966CW	6 x 6	5/8	1 1/8	4	2.9
P-9977CW	7 x 7	3/4	1 3/8	4 1/2	4.8

Rock anchor extensions

This product is used with a rock anchor when the rock surface is below the ground line. Hot dip galvanized forged steel.

Code	Length (in)	Rod diameter (in)	Type of eye thimble	Approx. weight (kg)
P-343AE	36	3/4	Twin	3.2
P-344AE	48	3/4	Twin	3.9
P-345AE	60	3/4	Twin	4.6
P-11415AE	18	1 1/4	Quad	8.2
P-1143AE	36	1 1/4	Quad	8.6

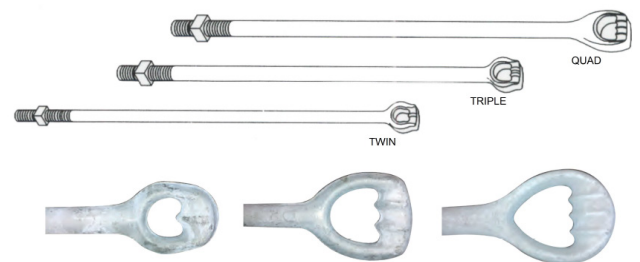


Anchor rods

Hot dip galvanized.

Anchor rods are assembled with one square nut.

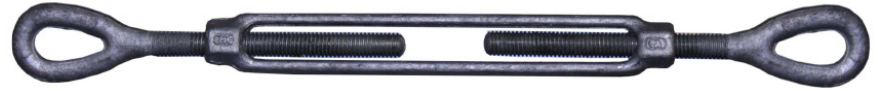
Code	Material	Length (feet)	Rod diameter (in)	Type of eye thimble	Ultimate strength (lbs)	Approx. weight (kg)
P-586ST	Galv. steel	6	5/8	Single	16000	2.9
P-348ST	Galv. steel	8	3/4	Single	23000	5.7
P-3410ST	Galv. steel	10	3/4	Single	23000	6.8
P-586DT	Galv. steel	6	5/8	Twin	16000	2.9
P-587DT	Galv. steel	7	5/8	Twin	16000	3.6
P-588DT	Galv. steel	8	5/8	Twin	16000	3.8
P-346DT	Galv. steel	6	3/4	Twin	23000	4.9
P-347DT	Galv. steel	7	3/4	Twin	23000	5.0
P-348DT	Galv. steel	8	3/4	Twin	23000	5.6
P-349DT	Galv. steel	9	3/4	Twin	23000	6.4
P-3410DT	Galv. steel	10	3/4	Twin	23000	7.1
P-18DT	Galv. steel	8	1	Twin	36000	10.4
P-19DT	Galv. steel	9	1	Twin	36000	11.7
P-110DT	Galv. steel	10	1	Twin	36000	12.9
P-347TT	Galv. steel	7	3/4	Triple	23000	5.1
P-348TT	Galv. steel	8	3/4	Triple	23000	5.7
P-18TT	Galv. steel	8	1	Triple	36000	10.0
P-19TT	Galv. steel	9	1	Triple	36000	11.8
P-110TT	Galv. steel	10	1	Triple	36000	12.3
P-1148TT	Galv. steel	8	1 1/4	Triple	50000	15.9
P-11410TT	Galv. steel	10	1 1/4	Triple	58000	19.9
P-1149QT	Galv. steel	9	1 1/4	Quad	50000	13.0



■ Turnbuckles

Made of forged carbon steel, hot dip galvanized.
Turnbuckles features two lock nuts.

Turnbuckles are designed for straight (in-line) pulls only.
Never exceed Working Load Limits.
Proof Load is 2.5 times the max. Working Load.
Ultimate Load is 5 times the max. Working Load.



P-386EE

Code	Terminations	Thread diameter (in)	Take-up (in)	Max. working load (lbs)	Approx. weight (kg)
P-144CC	Clevis-Clevis	1/4	4	500	0.16
P-144CE	Clevis-Eye	1/4	4	500	0.14
P-144EE	Eye-Eye	1/4	4	500	0.12
P-51645CC	Clevis-Clevis	5/16	4 1/2	800	0.24
P-51645CE	Clevis-Eye	5/16	4 1/2	800	0.23
P-51645EE	Eye-Eye	5/16	4 1/2	800	0.21
P-386CC	Clevis-Clevis	3/8	6	1200	0.37
P-386CE	Clevis-Eye	3/8	6	1200	0.36
P-386EE	Eye-Eye	3/8	6	1200	0.35
P-129CC	Clevis-Clevis	1/2	9	2200	0.79
P-129CE	Clevis-Eye	1/2	9	2200	0.78
P-129EE	Eye-Eye	1/2	9	2200	0.79
P-1212CC	Clevis-Clevis	1/2	12	2200	1.09
P-1212CE	Clevis-Eye	1/2	12	2200	0.94
P-1212EE	Eye-Eye	1/2	12	2200	0.97
P-589CC	Clevis-Clevis	5/8	9	3500	1.56
P-589CE	Clevis-Eye	5/8	9	3500	1.44
P-589EE	Eye-Eye	5/8	9	3500	1.36
P-5812CC	Clevis-Clevis	5/8	12	3500	1.77
P-5812CE	Clevis-Eye	5/8	12	3500	1.64
P-5812EE	Eye-Eye	5/8	12	3500	1.55
P-3412CC	Clevis-Clevis	3/4	12	5200	2.98
P-3412CE	Clevis-Eye	3/4	12	5200	2.69
P-3412EE	Eye-Eye	3/4	12	5200	2.49
P-3418CC	Clevis-Clevis	3/4	18	5200	3.64
P-3418CE	Clevis-Eye	3/4	18	5200	3.17
P-3418EE	Eye-Eye	3/4	18	5200	3.26

■ Plastic guy guards

Plastic guy guards are made from high density, impact resistant polyethylene with ultra-violet stabilizers. Clamp is hot dip galvanized steel.

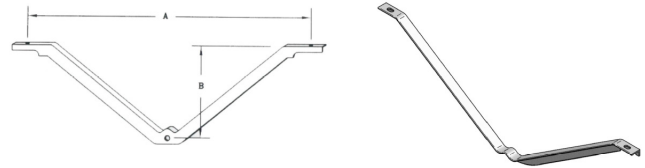
Code	Length (feet)	Color	Approx. weight (kg)
P-700YG	7	Yellow	1.6
P-700GG	7	Green	1.6



■ Angle braces

The angle brace is used to give support to a wooden crossarm mounted on a pole. It is attached to the underside of crossarms using 1/2 lag screws and is fastened to the pole using a 5/8 machine bolt.

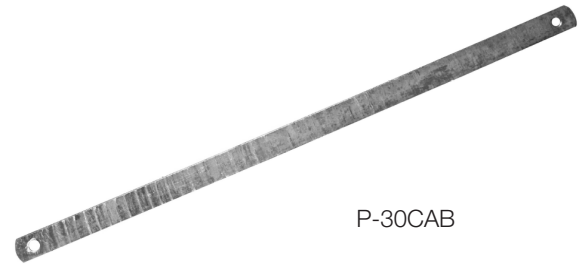
Code	Length A (in)	Drop B (in)	Angle size (in)	Angle thickness (in)	Approx. weight (kg)
P-1AB	37	12	1 1/2	3/16	3.2
P-2AB	42	12	1 1/2	3/16	3.3
P-3AB	48	14	1 1/2	3/16	4.1
P-4AB	48	18	1 1/2	3/16	4.2
P-5AB	60	18	1 1/2	3/16	4.8
P-6AB	72	22	1 1/2	3/16	5.7
P-7AB	60	18	1 3/4	3/16	6.0
P-8AB	72	22	1 3/4	3/16	6.7



■ Flat cross arm braces

Each brace is rounded at both ends, one 9/16 hole is punched at one end and a 7/16 hole is punched at the other end.

Code	Material	Length (in)	Width (in)	Thickness (in)	Approx. weight (kg)
P-18CAB	Galv. steel	18	1 1/4	3/16	0.53
P-22CAB	Galv. steel	22	1 1/4	3/16	0.65
P-24CAB	Galv. steel	24	1 1/4	3/16	0.71
P-26CAB	Galv. steel	26	1 1/4	3/16	0.77
P-28CAB	Galv. steel	28	1 1/4	3/16	0.83
P-30CAB	Galv. steel	30	1 1/4	3/16	0.89
P-32CAB	Galv. steel	32	1 1/4	3/16	0.95



■ Diagonal "alley" arm braces

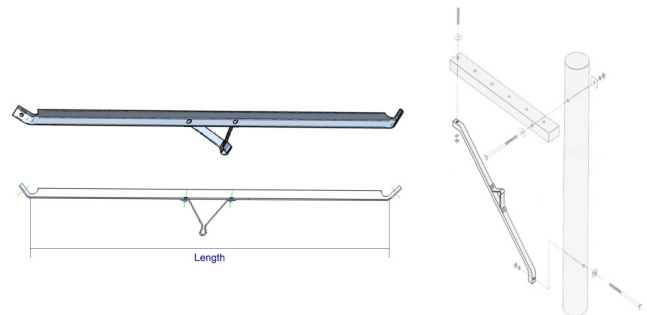
The alley arm braces are intended to be used for supporting a wood crossarm which extends on one side of the pole only.

They feature a step in their middle (except code P-8ASB) securely bolted to the brace.

Each end is forged to an angle of 45° (except code P-8ASB) and drilled with 11/16" diameter hole. Code P-8ASB features one end at a 45° angle, the other end at 60° and there is no step in the middle.

Angle clip adapter 3472CLIP is sold separately, except on code P-3472SBBC.

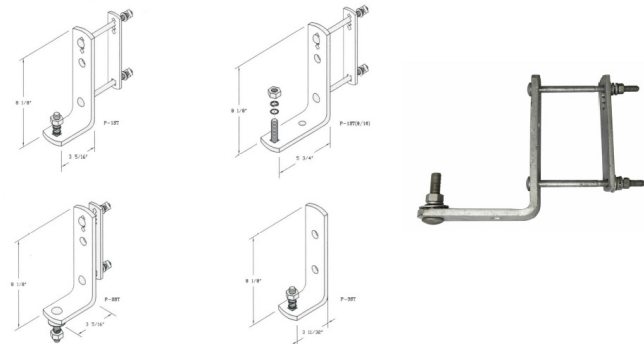
Code	Description	Length (in)	Angle size (in)	Angle thickness (in)	Approx. weight (kg)
P-1260SB	No adapter	60	1 1/2	3/16	5.0
P-3460SB	No adapter	60	1 3/4	3/16	5.4
P-3472SB	No adapter	72	1 3/4	3/16	6.4
P-3472SBBC	c/w adapter	72	1 3/4	3/16	6.9
P-3484SB	No adapter	84	1 3/4	3/16	7.3
P-8ASB	No step	96	2	1/4	7.7
P-2120SB	No adapter	120	2	1/4	8.2
3472CLIP	Adapter only	2 1/2	3 1/2	1/4	0.5



■ Cut-out mounting brackets

1/2" carriage mounting bolt is captive.
 Spacing between the fixing carriage bolts of supports P-1ST, P-1ST(9/16) and P-2ST is easily adjustable in 4 different positions (4 1/2" to 5 1/2").

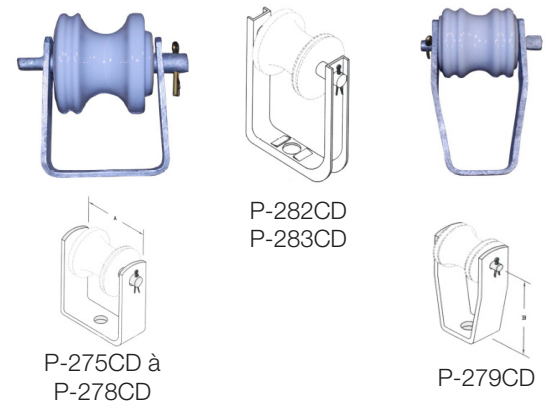
Code	Material	Height (in)	Length (in)	Mounting bolt (in)	Fixing bolts (in)	Approx. weight (kg)
P-1ST	Galv. steel	8 1/8	3 5/16	1/2 x 1 1/2	3/8 x 5	1.14
P-1ST (9/16)	Galv. steel	8 1/8	5 3/4	1/2 x 2 1/2	3/8 x 5 1/2	1.71
P-2ST	Galv. steel	8 1/8	3 5/16	1/2 x 2	3/8 x 1 1/2	0.92
P-3ST	Galv. steel	8 1/8	3 5/8	1/2 x 1 1/2	n/a	1.07
P-1ST (BACKPLATE)	Galv. steel	6 3/4	n/a	n/a	n/a	0.25



■ Clevis

Complete with brass cotter pin.
 Add suffix "D" for clevis mounted with insulator.

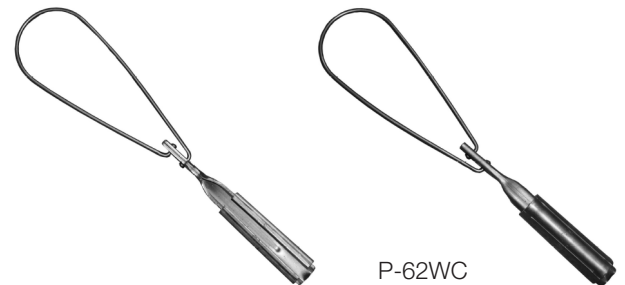
Code	Material	A (in)	B (in)	Mounting hole (in)	Steel sizes	Pin diameter (in)	Approx. weight (kg)
P-275C	Galv. steel	2 1/8	2 1/2	11/16	1/8 x 1 1/2	3/8	0.23
P-277C	Galv. steel	3 3/8	3 1/2	11/16	3/16 x 1 1/2	5/8	0.59
P-278C	Galv. steel	3 1/4	3 3/8	11/16	1/4 x 2	5/8	0.95
P-279C	Galv. steel	2 3/8	4 1/4	11/16	3/16 x 1 1/2	3/8	0.42
P-282C	Galv. steel	3 3/8	3 1/2	11/16	U 1/8 x 1 1/4	5/8	0.57
P-283C	Galv. steel	3 3/8	3 1/2	13/16	U 1/8 x 1 1/4	5/8	0.57



■ Aluminum wedge clamps

The wedge clamps feature a solid bail stirrup in stainless steel and an aluminum body.

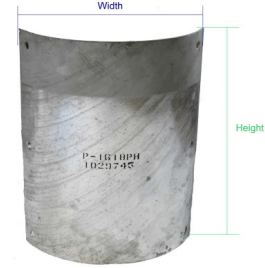
Code	Bail stirrup length (in)	Wire range ACSR	Wire Range Aluminum	Approx. weight (kg)
P-62WC	6 1/2	#2 to #4	#1 to #4	0.06
P-62WC(D)	6 1/2	#2 to #6	#1 to #6	0.08
P-20WC	6 1/2	1/0 to #4	2/0 to #2	0.14
P-40WC	6 1/2	4/0 to 0/2	4/0 to 2/0	0.16



■ Pole hubs

The pole hubs are used for mechanical protection of wooden pole base. Installation on the pole is made with six lag bolts.

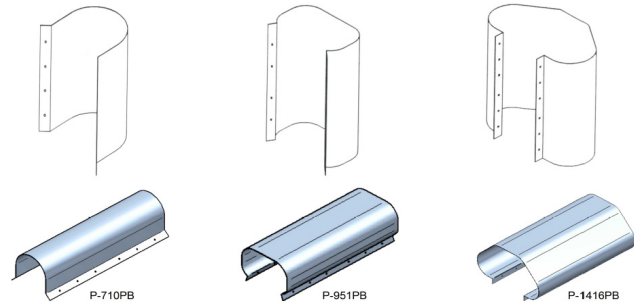
Code	Material	Height (in)	Width (in)	Thickness	Approx. weight (kg)
P-1618PH	Galv. steel	18	16	12 gages	4.02
P-1624PH	Galv. steel	18	16	10 gages	6.94



■ Pole pilasters (concrete form)

The pole pilasters are used as concrete formwork for mechanical protection of overhead-underground conduits located at the base of the distribution poles. Installation on the pole is made with twelve 1/4 lag bolts.

Code	Material	Height (mm)	Width (mm)	Application	Conduit diam. (mm)	Approx. weight (kg)
P-710PB	Galv. steel	1000	324	2 conduits	50	8.4
P-951PB	Galv. steel	1000	411	2 conduits	100	11.3
P-1416PB	Galv. steel	1000	648	4 conduits	100	16.9



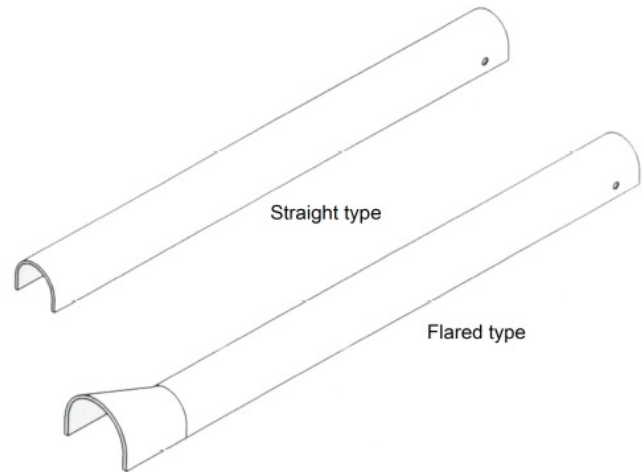
■ “U” cable guards

The U cable guards are used to protect the overhead to underground cables on distribution poles.

Flared type cable guard (UCGF) is for installation over overhead to underground conduits.

Installation is made with cable guard straps fixed on the pole with lag bolts.

Code	Material	Type	Length (feet)	Diameter (in)	Approx. weight (kg)
P-348UCG	Galv. steel	Straight	8	3/4	0.24
P-1148UCG	Galv. steel	Straight	8	1 1/4	0.35
P-2148UCG	Galv. steel	Straight	8	2 1/4	0.59
P-3148UCG	Galv. steel	Straight	8	3 1/4	0.91
P-3348UCG	Galv. steel	Straight	8	3 3/4	0.98
P-4148UCG	Galv. steel	Straight	8	4 1/4	1.27
P-58UCG	Galv. steel	Straight	8	5	1.36
P-5148UCG	Galv. steel	Straight	8	5 1/4	1.39
P-1148UCGF	Galv. steel	Flared	8	1 1/4	0.21
P-2148UCGF	Galv. steel	Flared	8	2 1/4	0.59
P-3148UCGF	Galv. steel	Flared	8	3 1/4	0.84
P-3348UCGF	Galv. steel	Flared	8	3 3/4	1.11
P-4148UCGF	Galv. steel	Flared	8	4 1/4	1.37
P-58UCGF	Galv. steel	Flared	8	5	1.45
P-5148UCGF	Galv. steel	Flared	8	5 1/4	1.48



■ Cable guard straps

Use two lag bolts to install the straps.

Code	Material	U cable guard size (in)	Thickness (in)	Width (in)	Type of strap	Approx. weight (kg)
P-34CS	Galv. steel	3/4	1/8	3/4	Fig. 1	0.05
P-114CS	Galv. steel	1 1/4	1/8	3/4	Fig. 1	0.07
P-134CS	Galv. steel	1 3/4	1/8	1	Fig. 2	0.10
P-214CS	Galv. steel	2 1/4	1/8	1	Fig. 2	0.13
P-314CS	Galv. steel	3 1/4	1/8	1	Fig. 1	0.27
P-334CS	Galv. steel	3 3/4	3/16	1	Fig. 1	0.31
P-4CS	Galv. steel	4	9 gages	1	Fig. 2	0.28
P-414CS	Galv. steel	4 1/4	3/16	1	Fig. 1	0.36
P-514CS	Galv. steel	5 1/4	9 gages	1	Fig. 2	0.39

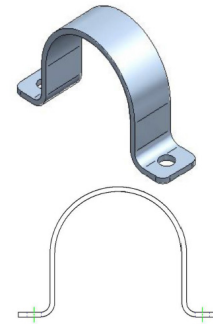


Fig. 1 - Aligned ends

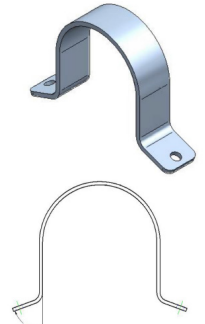


Fig. 2 - Inclined ends

■ Transformer mounting brackets

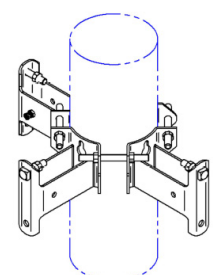
Hot dip galvanized.

Pole diameter ranges available on request.

Cluster mount for 3 transformers, for poles ranging from 8" to 12" in diameter.

The P-1TM is delivered with the following parts :

- 3x Support brackets
- 1x Back plate
- 4x Double arming bolts 3/4" x 8"
- 3x Square head mechanical bolts 3/4" x 3"
- 11x Hexagonal nuts 3/4"
- 1x Split bolt connector, copper alloy body, tin plated, for #8 SOL to #4 STR ground wire.

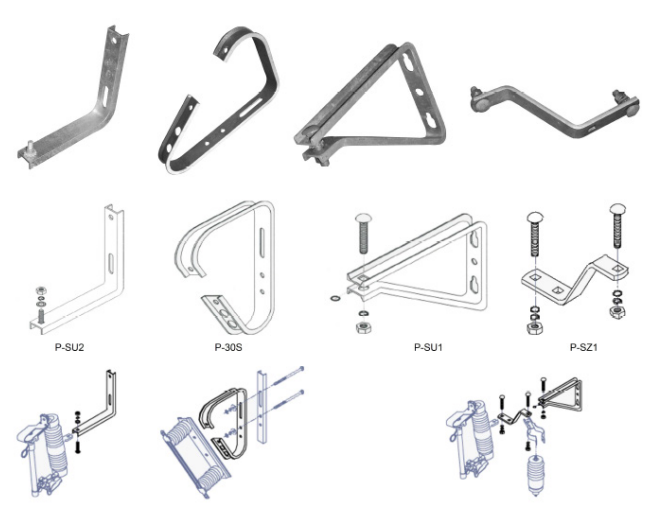


Code	Material	Description	Approx. weight (kg)
P-1TM	Galv. steel	Assembly	18.2

■ Universal supports

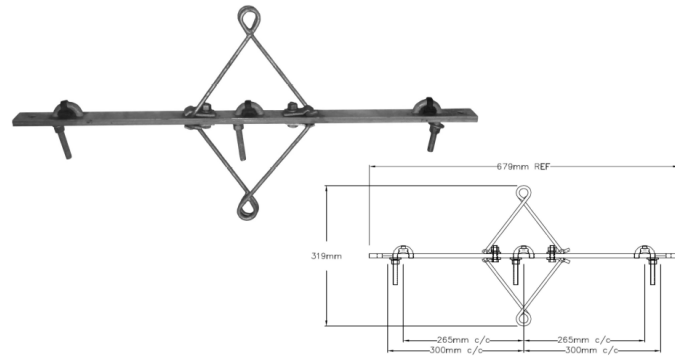
1/2" carriage mounting bolts are captive on the P-SU1 and P-SZ1 supports.

Code	Material	Steel section (in)	Length (in)	Height (in)	Mounting bolt	Fixing holes (in)	Approx. weight (kg)
P-SU1	Galv. steel	U 1/2 x 1 1/2	11 1/2	8 3/8	1/2 x 2 1/4	11/16	1.39
P-SU2	Galv. steel	U 1 x 2	11 1/2	11 1/2	1/2 x 2	11/16	1.91
P-30S	Galv. steel	U 1/2 x 2	11	16 3/4	n/a	9/16	1.69
P-SZ1	Galv. steel	5/16 x 1 1/2	10 1/4	5	1/2 x 2	9/16 (square)	0.91



Mid-span brackets

The product is attached to secondary conductors span with the J hooks. It is used for spacing three secondary wires and deadending one or two neutral-supported service cables. This item is as per standard CSA C83.132 - item 2.

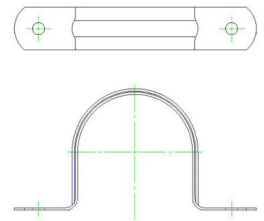


Code	Body material	Hardware material
BARRE-3P-2-477-HQ	Composite	Galv. steel

PVC coated straps

The given diameter shows the nominal diameter of the part to be strapped. Straps with grey PVC coating are also available, add suffix "-G" to catalog numbers.

Code	Material	Coating	Diameter (in)	Width (inch)	Mounting holes (in)	Approx. weight (kg)
P-160-34	Galv. steel	PVC Black	3/4	3/4	3/16	0.021
P-160-10	Galv. steel	PVC Black	1	3/4	3/16	0.025
P-160-12	Galv. steel	PVC Black	1 1/2	7/8	1/4	0.037
P-160-20	Galv. steel	PVC Black	2	7/8	1/4	0.046
P-160-25	Galv. steel	PVC Black	2 1/2	1	3/8	0.061
P-160-30 ***	Galv. steel	PVC Black	3 5/8	1	5/16	0.141
P-160-40	Galv. steel	PVC Black	4	1 1/4	9/16	0.287

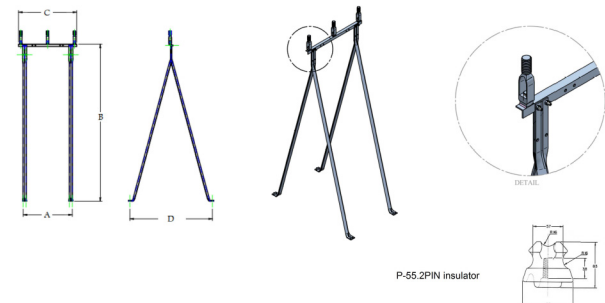


*** this item features legs with a 20 degrees angle.

Tripods

This tripod features 3 pin with lead adaptor 1 inch to install pin insulators. Each leg is made from a steel angle 1/8 x 1 x 1 inch and presents two 5/16 holes at the base to fix the tripod on a surface. Can be ordered with or without insulators P-55.2PIN (porcelain insulator, type ANSI 55-2, 7.2 kV nominal voltage). Use aluminum wedge clamps to anchor triplex wire to the insulators.

Code	Description	Material	A (mm)	B (mm)	C (mm)	D (mm)	Approx. weight (kg)
P-603T	C/W insulators	Galv. steel	537	1712	635	902	12.8
P-604T	No insulator	Galv. steel	537	1712	635	902	10.7
P-55.2PIN	Insulator only	Porcelain	-	-	-	-	0.7



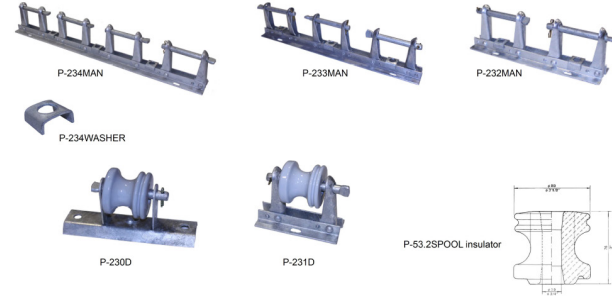
P-55.2PIN insulator

■ Secondary racks

The mounting pins for insulator are 5/8 diameters and secure with a brass cotter pin. Rack for 3 wires are delivered with three special washers for installation with 5/8 diameters bolts.

P-230D and P-231D are always supplied with insulator.

Spool insulators P-53.2SPOOL (porcelain spool insulator, type ANSI 53-2) is available for the other models (order separately).



Code	Material	Insulators	No. of wires	Mounting pins for insulators	Length (in)	Width (in)	Approx. weight (kg)
P-230D	Galv. steel	c/w insulator	1	1 pin	9	2 13/16	1.4
P-231D	Galv. steel	c/w insulator	1	1 pin	6 1/2	2 13/16	1.5
P-232MAN	Galv. steel	not included	2	2 pins	14	2 13/16	2.3
P-233MAN	Galv. steel	not included	3	3 pins	22	2 13/16	3.5
P-233T	Galv. steel	not included	3	1 pin	22	2 13/16	2.4
P-234MAN	Galv. steel	not included	4	4 pins	30	2 13/16	4.7
P-53.2SPOOL	Galv. steel	Insulator only	-	-	-	-	0.57

■ Notes

■ Curved square washers

Hot dip galvanized steel.

Code	Dimensions (in)	Hole Diameter (in)	Thickness (in)	Radius (in)	Approx. weight (kg)
P-9921CW	2 1/2 x 2 1/2	1 1/16	3/16	4	0.15
P-9922CW	3 x 3	13/16	1/4	4	0.27
P-9923CW	3 1/4 x 3 1/8	13/16	1/4	4	0.31
P-9924CW	3 1/2 x 3 3/8	13/16	3/8	4	0.55
P-9925CW	4 x 4	13/16	1/4	4	0.50
P-9925CWHQ	4 x 4	1	3/8	4	0.60



P-9922CW

■ Carriage bolts

Hot dip galvanized steel.

Other dimensions are available upon request.

Supplied with a mounted square nut.

Steel as per ASTM A307 Grade A (or equivalent).

Code	Dimensions (in)	Thread length (in)	LbS./Unit
P-9382C	3/8 x 2	1	0.07
P-9384C	3/8 x 4	1	0.13
P-9385C	3/8 x 5	1	0.17
P-9386C	3/8 x 6	1	0.19
P-9485C	1/2 x 5	1 1/4	0.30
P-9486C	1/2 x 6	1 1/4	0.35
P-9583C	5/8 x 3	1 1/4	0.30
P-9584C	5/8 x 4	1 1/4	0.40
P-9585C	5/8 x 5	1 1/4	0.47
P-9586C	5/8 x 6	1 1/4	0.55
P-9587C	5/8 x 7	1 1/4	0.64



P-9382C

■ Double arming bolts

Hot dip galvanized steel.

Double arming bolts are assembled with four square nuts.

Double arming bolts are full thread.

Other dimensions are available upon request.

Manufactured as per C.S.A standard.

Steel as per ASTM A307 Grade A (or equivalent)

Code	Dimensions	Lbs./Unit
P-9530DA	5/8 x 10	1.18
P-9532DA	5/8 x 12	1.36
P-9534DA	5/8 x 14	1.42
P-9536DA	5/8 x 16	1.58
P-9538DA	5/8 x 18	1.87
P-9540DA	5/8 x 20	1.92
P-9542DA	5/8 x 22	2.10
P-9544DA	5/8 x 24	2.25
P-9546DA	5/8 x 26	2.40
P-9548DA	5/8 x 28	2.56
P-9550DA	5/8 x 30	2.64
P-9630DA	3/4 x 10	1.90
P-9632DA	3/4 x 12	1.96
P-9634DA	3/4 x 14	2.20
P-9636DA	3/4 x 16	2.40
P-9638DA	3/4 x 18	2.60
P-9640DA	3/4 x 20	2.84
P-9642DA	3/4 x 22	3.05
P-9644DA	3/4 x 24	3.36
P-9646DA	3/4 x 26	3.45
P-9648DA	3/4 x 28	3.65
P-9650DA	3/4 x 30	3.86



Machine bolts

Hot dip galvanized steel.
 Supplied with a mounted square nut.
 Steel as per ASTM A307 Grade A (or equivalent).

Code	Dimensions (in)	Thread length (in)	LbS./Unit
P-9305M	3/8 x 5	1 3/8	0.18
P-9306M	3/8 x 6	1 3/8	0.20
P-9406M	1/2 x 6	1 3/4	0.36
P-9407M	1/2 x 7	4	0.41
P-9408M	1/2 x 8	4	0.46
P-9410M	1/2 x 10	6	0.57
P-9412M	1/2 x 12	6	0.68
P-9414M	1/2 x 14	6	0.79
P-9416M	1/2 x 16	6	0.88
P-9506M	5/8 x 6	2	0.58
P-9508M	5/8 x 8	4	0.74
P-9510M	5/8 x 10	4	0.91
P-9512M	5/8 x 12	6	1.08
P-9514M	5/8 x 14	6	1.25
P-9516M	5/8 x 16	6	1.36
P-9518M	5/8 x 18	6	1.52
P-9520M	5/8 x 20	6	1.70
P-9603M	3/4 x 3	1 3/4	0.50
P-9608M	3/4 x 8	4	1.10
P-9610M	3/4 x 10	6	1.33
P-9612M	3/4 x 12	6	1.60
P-9614M	3/4 x 14	6	1.82
P-9616M	3/4 x 16	6	2.12
P-9618M	3/4 x 18	6	2.28
P-9620M	3/4 x 20	6	2.50
P-9622M	3/4 x 22	6	2.75
P-9624M	3/4 x 24	6	3.00



Oval eye nuts

Hot dip galvanized steel.

Code	Description	LbS./Unit
P-12EN	1/2	0.70
P-58EN	5/8	0.70
P-34EN	3/4	0.70



P-34EN

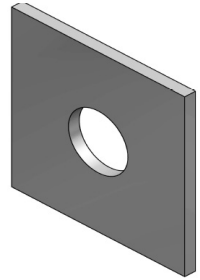


P-58EN

■ Square washers

Hot dip galvanized steel.

Code	Dimensions (in)	Hole diameter (in)	Thickness (in)	Bolt diameter (in)	Approx. weight (kg)
P-9901SW	2 x 2	11/16	1/8	5/8	0.6
P-9902SW	2 x 2	9/16	3/16	1/2	0.8
P-9903SW	2 x 2	11/16	3/16	5/8	0.8
P-9903SW(13/16)	2 x 2	13/16	3/16	3/4	0.8
P-9904SW	2 1/4 x 2 1/4	11/16	3/16	5/8	0.11
P-9905SW	2 1/4 x 2 1/4	13/16	3/16	3/4	0.11
P-9906SW	3 x 3	11/16	3/16	5/8	0.20
P-9907SW	3 x 3	13/16	3/16	3/4	0.20
P-9908SW	3 x 3	11/16	1/4	5/8	0.29
P-9909SW	3 x 3	13/16	1/4	3/4	0.27
P-9909SW(15/16)	3 x 3	15/16	1/4	7/8	0.27
P-9910SW	4 x 4	11/16	1/4	5/8	0.51
P-9911SW	4 x 4	13/16	1/4	3/4	0.50
P-9917SW	4 x 4	15/16	1/4	7/8	0.50
P-9911SW(1-1/4)	4 x 4	1 5/16	1/4	1 1/4	0.49
P-9912SW	4 x 4	1 1/8	3/8	1	0.73
P-9913SW	6 x 6	1 1/8	3/8	1	1.69
P-9913SW(13/8)	6 x 6	1 3/8	3/8	1 1/4	1.69



■ Bolt eyes

Hot dip galvanized steel.

Code	Slot (in)	Bolt size (in)	Eye opening (in)	Approx. weight (kg)
P-1116BE	11/16 x 1	5/8	1 1/4 x 3	0.35
P-1316BE	13/16 x 1 1/8	3/4	1 1/4 x 3	0.35



P-1116BE

■ Lag screws

Used to attach pole line hardware to wooden poles. Gimlet point lag screws can be installed with a wrench, fetter drive screws can be wrenched or driven like a nail with a hammer into the pole.

Dimensions are as per ASME B18.2.1 standard, galvanization as per ASTM A153 Class C (or equivalent), steel as per ASTM A307 Grade A (or equivalent).



Gimlet point



Fetter drive
Regular point



Fetter drive
Pilot point

Code	Material	Type	Point	Head	Diameter (in)	Length (in)	Approx. weight (kg)
P-922L	Galv. steel	Gimlet	Gimlet	Hexagonal	1/4	2	0.013
P-922LFH	Galv. steel	Fetter Drive	Regular	Hexagonal	1/4	2	0.013
P-9225L	Galv. steel	Gimlet	Gimlet	Hexagonal	1/4	2 1/2	0.015
P-9225LF	Galv. steel	Fetter Drive	Regular	Square	1/4	2 1/2	0.016
P-9225LFH	Galv. steel	Fetter Drive	Regular	Hexagonal	1/4	2 1/2	0.016
P-923L	Galv. steel	Gimlet	Gimlet	Hexagonal	1/4	3	0.018
P-924L	Galv. steel	Gimlet	Gimlet	Hexagonal	1/4	4	0.022
P-912L	Galv. steel	Gimlet	Gimlet	Hexagonal	5/16	2	0.017
P-9125L	Galv. steel	Gimlet	Gimlet	Hexagonal	5/16	2 1/2	0.021
P-913L	Galv. steel	Gimlet	Gimlet	Hexagonal	5/16	3	0.025
P-913LF	Galv. steel	Fetter Drive	Regular	Square	5/16	3	0.025
P-914L	Galv. steel	Gimlet	Gimlet	Hexagonal	5/16	4	0.029
P-932L	Galv. steel	Gimlet	Gimlet	Hexagonal	3/8	2	0.022
P-9325L	Galv. steel	Gimlet	Gimlet	Hexagonal	3/8	2 1/2	0.036
P-933L	Galv. steel	Gimlet	Gimlet	Hexagonal	3/8	3	0.041
P-933LF	Galv. steel	Fetter Drive	Pilot	Square	3/8	3	0.04
P-933LFH ***	Galv. steel	Fetter Drive	Pilot	Hexagonal	3/8	3	0.045
P-9335L	Galv. steel	Gimlet	Gimlet	Hexagonal	3/8	3 1/2	0.050
P-934L	Galv. steel	Gimlet	Gimlet	Hexagonal	3/8	4	0.053
P-934LF	Galv. steel	Fetter Drive	Pilot	Square	3/8	4	0.055
P-934LFH***	Galv. steel	Fetter Drive	Pilot	Hexagonal	3/8	4	0.055
P-9345L	Galv. steel	Gimlet	Gimlet	Hexagonal	3/8	4 1/2	0.057
P-935L	Galv. steel	Gimlet	Gimlet	Hexagonal	3/8	5	0.060
P-936L	Galv. steel	Gimlet	Gimlet	Hexagonal	3/8	6	0.075
P-937L	Galv. steel	Gimlet	Gimlet	Hexagonal	3/8	7	0.090
P-938L	Galv. steel	Gimlet	Gimlet	Hexagonal	3/8	8	0.105
P-940L	Galv. steel	Gimlet	Gimlet	Hexagonal	3/8	10	0.150

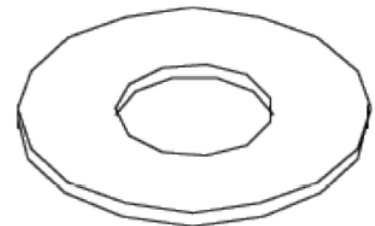
Code	Material	Type	Point	Head	Diameter (in)	Length (in)	Approx. weight (kg)
P-9425L	Galv. steel	Gimlet	Gimlet	Hexagonal	1/2	2 1/2	0.073
P-9425LF	Galv. steel	Fetter Drive	Pilot	Square	1/2	2 1/2	0.073
P-943L	Galv. steel	Gimlet	Gimlet	Hexagonal	1/2	3	0.083
P-943LF	Galv. steel	Fetter Drive	Pilot	Square	1/2	3	0.085
P-943LFH***	Galv. steel	Fetter Drive	Pilot	Hexagonal	1/2	3	0.085
P-944L	Galv. steel	Gimlet	Gimlet	Hexagonal	1/2	4	0.101
P-944LF	Galv. steel	Fetter Drive	Pilot	Square	1/2	4	0.103
P-944LFH***	Galv. steel	Fetter Drive	Pilot	Hexagonal	1/2	4	0.103
P-9445L	Galv. steel	Gimlet	Gimlet	Hexagonal	1/2	4 1/2	0.118
P-9445LF	Galv. steel	Fetter Drive	Pilot	Square	1/2	4 1/2	0.119
P-9445LFH	Galv. steel	Fetter Drive	Pilot	Hexagonal	1/2	4 1/2	0.119
P-945L	Galv. steel	Gimlet	Gimlet	Hexagonal	1/2	5	0.136
P-946L	Galv. steel	Gimlet	Gimlet	Hexagonal	1/2	6	0.159
P-948L	Galv. steel	Gimlet	Gimlet	Hexagonal	1/2	8	0.186
P-954L	Galv. steel	Gimlet	Gimlet	Hexagonal	5/8	4	0.174
P-955L	Galv. steel	Gimlet	Gimlet	Hexagonal	5/8	5	0.209
P-955LF	Galv. steel	Fetter Drive	Pilot	Square	5/8	5	0.209
P-956L	Galv. steel	Gimlet	Gimlet	Hexagonal	5/8	6	0.245
P-956LF	Galv. steel	Fetter Drive	Pilot	Square	5/8	6	0.245

*** item as per CSA C83.101 standard

■ Round washers

Hot dip galvanized steel.

Code	Bolt Size (in)	Outside diameter (in)	Hole diameter (in)	Thickness (in)	Approx. weight (kg)
P-9825R	3/8	1	7/16	5/64	0.006
P-9827R	1/2	1 3/8	9/16	7/64	0.017
P-9828R	5/8	1 3/4	11/16	1/8	0.035
P-9830R	3/4	2	13/16	9/64	0.045
P-9831R	7/8	2 1/4	15/16	5/32	0.063
P-9832R	1	2 1/2	1 1/16	5/32	0.077
P-9834R	1 1/4	3	1 3/8	5/32	0.107



P-9825R

Lock washers

Hot dip galvanized steel.

Code	Type	Bolt size (in)	Approx. weight (kg)
P-9730L	Single coil	3/8	0.003
P-9740L	Single coil	1/2	0.006
P-9750L	Single coil	5/8	0.011
P-9760L	Single coil	3/4	0.018
P-9770L	Single coil	7/8	0.027
P-9780L	Single coil	1	0.040
P-9791L	Single coil	1 1/4	0.075
P-9730DL	Double coil	3/8	0.006
P-9740DL	Double coil	1/2	0.012
P-9750DL	Double coil	5/8	0.022
P-9760DL	Double coil	3/4	0.036
P-9770DL	Double coil	7/8	0.054



P-9750L



P-9750DL

Nuts

Hot dip galvanized steel, tapped oversized.

Code	Type	Bolt size (in)
P-9200N	Square	1/4 -20UNC
P-9300N	Square	3/8 -16UNC
P-9400N	Square	1/2 -13UNC
P-9500N	Square	5/8 -11UNC
P-9600N	Square	3/4 -10UNC
P-9700N	Square	7/8 -9UNC
P-9800N	Square	1 -8UNC
P-9200NH	Hexagonal	1/4 -20UNC
P-9300NH	Hexagonal	3/8 -16UNC
P-9400NH	Hexagonal	1/2 -13UNC
P-9500NH	Hexagonal	5/8 -11UNC
P-9600NH	Hexagonal	3/4 -10UNC
P-9700NH	Hexagonal	7/8 -9UNC
P-9800NH	Hexagonal	1 -8UNC



P-9500N

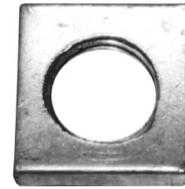


P-9500NH

■ Concave square locknuts

Hot dip galvanized steel.

Code	Bolt Size (in)
P-9300LN	3/8
P-9400LN	1/2
P-9500LN	5/8
P-9600LN	3/4
P-9700LN	7/8



P-9500LN

■ Notes

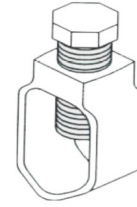
■ Grounding rod connectors

The ground rod connectors are used to connect ground wires to ground rods or ground plates.

Code	Rod diameter	Material	Ground wire	Approx. weight (kg)
P-515	5/8 and 3/4	Galv. steel	2 sol - 2/0 str	0.28
P-12WB	1/2	Bronze	8 sol - 2 str	0.04
P-58WB	5/8	Bronze	8 sol - 2 str	0.05
P-34WB	3/4	Bronze	8 sol - 2 str	0.06
P-34WBO	5/8 and 3/4	Bronze	8 sol - 3/0 str	0.10



Bronze



Galvanized steel

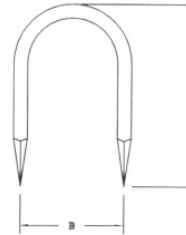


■ Nuts

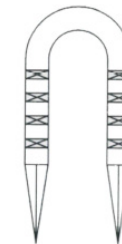
These extra heavy staples are used to attach ground wire molding and wire to the pole.

The P-41CU staple features cleated legs making its extraction harder.

Code	Material	Length A (mm)	Length A (in)	Opening B (mm)	Opening B (in)	Approx. weight (kg)
P-41CU	Copperweld	38.1	1 1/2	9.5	3/8	0.005
P-41STA	Galv. steel	25.4	1	9.5	3/8	0.005
P-41STA(1-1/4)	Galv. steel	31.7	1-1/4	9.5	3/8	0.005
P-41STA(1-1/2)	Galv. steel	38.1	1-1/2	9.5	3/8	0.005
P-41STA(1-3/4)	Galv. steel	44.4	1-3/4	9.5	3/8	0.01
P-44STA	Galv. steel	50.8	2	12.7	1/2	0.01
P-45STA	Galv. steel	50.8	2	17.5	11/16	0.01
P-40STA	Galv. steel	76.2	3	27.0	1-1/16	0.02
P-43STA	Galv. steel	76.2	3	38.1	1-1/2	0.04
P-42STA	Galv. steel	76.2	3	60.3	2-3/8	0.04



P - ...STA

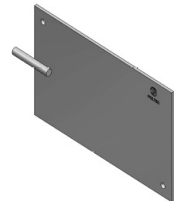


P - 41CU

■ Grounding plates

Add suffix C for grounding plate complete with connector P-34WBO (for 5/8 and 3/4 rod, ground wire 8 sol to 3/0 str).

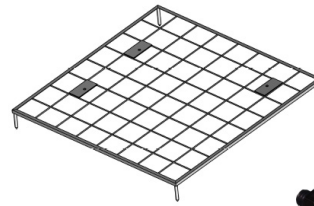
Code	Material	Rod diam. (mm)	Rod diam. (in)	Plate dim. (mm)	Plate dim. (in)	Approx. weight (kg)
P-1016GP	Galv. steel	15.9	5/8	6.35x254x406	1/4 x 10 x 16	5.28
P-2412GP	Galv. steel	19.0	3/4	12.7x305x610	1/2 x 12 x 24	18.6



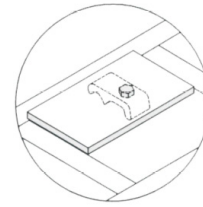
■ Gradient control grounding mats

Gradient Control Grounding Mat can be supplied on request with 3 connectors P-51611C for ground wire (#2 str to 4/0 str). Each Gradient Control Grounding Mat features 3 grounding platforms to accommodate different connectors using 1/2 bolts.

Code	Material	Frame (feet)	Wire Mesh (in)	Platform for connectors	Rod dim. (in)	Approx. weight (kg)
P-51608GM	Galv. steel	4 x 4	6 x 6 x 1/4	3 (9/16 hole)	5/8 x 5	9.6
P-51612GM	Galv. steel	4 x 6	6 x 6 x 1/4	3 (9/16 hole)	5/8 x 5	13.6



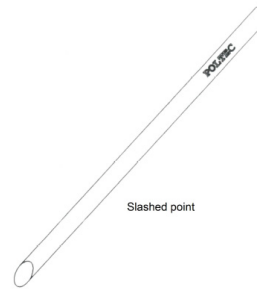
P - 51611C



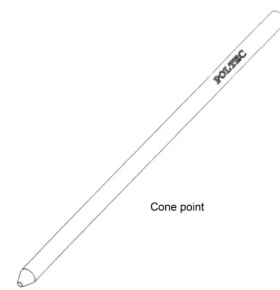
■ Galvanized ground rods

All ground rods are manufactured with a slashed point. The rods are made of hot dip galvanized steel. Add suffix "H" for ground rods manufactured with cone point.

Code	Material	Rod diameter (in)	Length (feet)	Approx. weight (kg)
P-556SG	Galv. steel	5/8	6	2.8
P-557SG	Galv. steel	5/8	7	3.3
P-558SG	Galv. steel	5/8	8	3.8
P-560SG	Galv. steel	5/8	10	4.7
P-566SG	Galv. steel	3/4	6	4.1
P-568SG	Galv. steel	3/4	8	5.4
P-570SG	Galv. steel	3/4	10	6.8



Slashed point

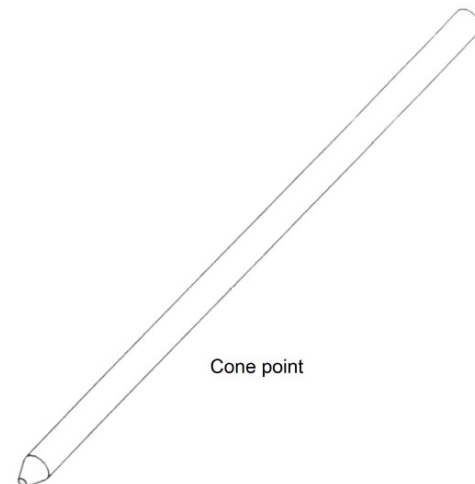


Cone point

■ Copper plated ground rods

All ground rods are manufactured with a cone point. The rods are made of electrolytic copper plated steel.

Code	Rod diameter (in)	Length (feet)	Approx. weight (kg)
P-586CG	5/8	6	2.3
P-588CG	5/8	8	3.1
P-5810CG	5/8	10	3.8
P-346CG	3/4	6	3.4
P-348CG	3/4	8	4.5
P-3410CG	3/4	10	5.6

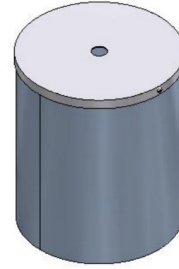


Cone point

■ Grounding electrode boxes

The ground electrode box (inspection grounding well) provides a convenient access point to check the performance of connections to the ground rod. The box is made of hot dip galvanized steel for corrosion resistance.

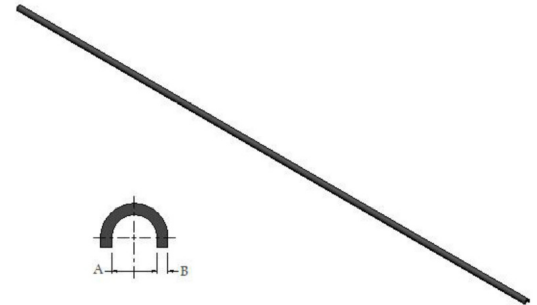
Code	Material	Diameter (in)	Depth (in)	Approx. weight (kg)
P-51610	Galv. steel	10	12	3.8
P-51610-24	Galv. steel	10	24	6.8



■ Plastic moldings

Plastic moldings are used to protect the ground wire on utility pole. Molding made from PVC, UV light resistant.

Code	Color	Length (feet)	Diameter A (in)	Thickness B (in)	Approx. weight (kg)
P-128PM	Black	8	1/2	1/16	0.27
P-128PMG	Grey	8	1/2	1/16	0.27
P-128PMHQ	Black	10	3/4	1/8	0.80



■ Notes

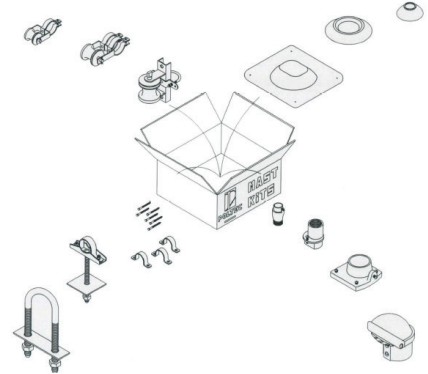
Entrance masts

Code	Diameter (in)	Length (feet)	Approx. weight (kg)
108	2 1/2	8	12.3
109	2 1/2	9	13.8
110	2 1/2	10	15.4
111	2 1/2	11	17.0
112	2 1/2	12	18.6
113	2 1/2	13	20.2



Mast entrance kits

Kits of many configurations are available upon request.
Hot dip galvanized steel



Entrance caps

Code	Throat entrance (in)	Mast size (in)	Approx. weight (kg)
120	1 1/4	2 1/2	0.45
122	2	2 1/2	0.57



120

Reducers

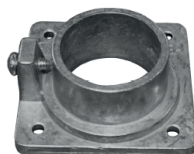
Code	Diameter (in)	Type of reducer
131	1 1/4	Female
132	1 1/4	Male
133	1 1/2	Female
134	1 1/2	Male
135	2	Female
136	2	Male
136-H	2	Mast coupler



131
Female reducer



132
Male reducer



136-H
Mast coupler

Roof flanges & collars

Code	Description	Mast size (in)	Collar	Flange
140	Collar + Flange	2 1/2	Steel	Steel
144	Collar + Flange	2 1/2	Neoprene	Steel
1441-1/4	Collar + Flange	1 1/4	Neoprene	Steel
141	Flange only	2 1/2	-	Steel
142	Collar only	2 1/2	Steel	-
146	Collar only	2 1/2	Neoprene	-
1461-1/4	Collar only	1 1/4	Neoprene	-



146
Neoprene collar



141
Steel flange

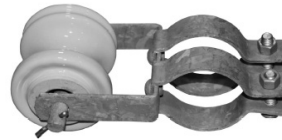
Spool racks

Body is hot dip galvanized steel.

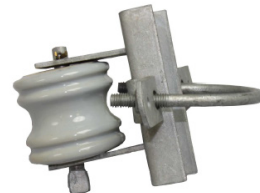
2 inches insulator type ANSI 53-1 is supplied with low duty rack.

3 inches insulator type ANSI 53-2 is supplied with heavy duty rack.

Code	Mounting	Mast size (in)	Class of duty	Approx. weight (kg)
151	Mast	2 1/2	Heavy Duty	1.1
153	Mast or Wall	2 1/2	Low Duty	0.8
154	Mast or Wall	2 1/2	Heavy Duty	1.5



151



154

Grounding wire clamps

Body is aluminum-bronze, U-bolt and hex. nuts are silicon-bronze. Manufactured as per Hydro-Québec requirements.

Code	Mast size (in)	Ground wire range	Approx. weight (kg)
173HQ	2 1/2	#8 SOL to 1/0	0.32



173HQ

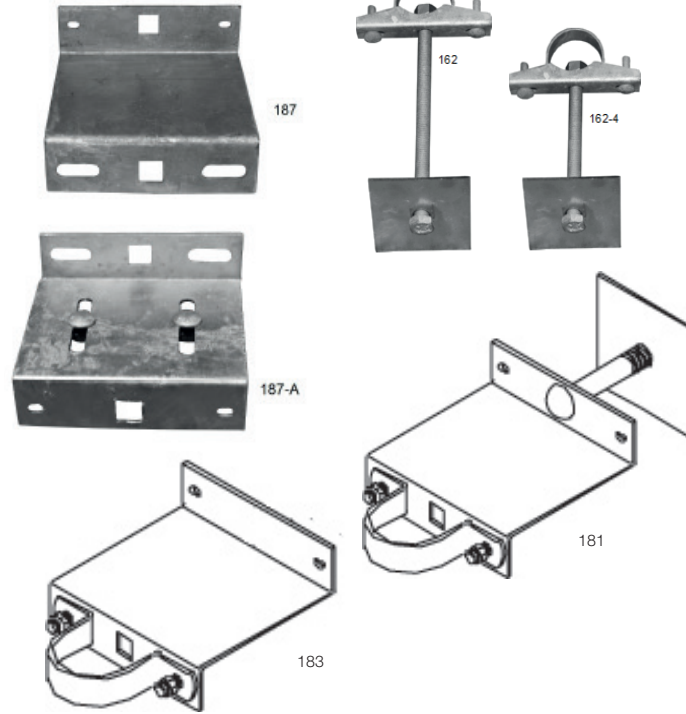
■ Mast clamps

All items are hot dip galvanized steel.
 Pipe straps No. 160 are installed with two lag bolts 3/8 x 4 inches.
 Support clamps for mast No. 162 and No. 162-4 are delivered with one full thread bolt and one square washer.
 Catalog No. 165 is a U-bolt 1/2 x 7 inches complete with a plate 5 x 1-1/4 inches.
 Item No. 181 features a brick spacer with a pipe strap and is delivered with a 5/8 x 4-1/2 inches bolt and a 4 x 4 inches square washer. Item No. 183 is only the spacer with the strap, item No. 187 is only the spacer (no strap, no bolt, no washer).

Code	Description	Mast size (in)	Bolts dimensions (in)	Washer dimensions (in)
160	Pipe strap	2 1/2	-	-
161	Strap c/w lag bolt	2 1/2	3/8 x 4	-
P-934L	Lag bolt	-	3/8 x 4	-
162	Clamp c/a bolt	2 1/2	5/8 x 10	4 x 4
162-4	Clamp c/a bolt	2 1/2	5/8 x 4 1/2	4 x 4
162-C	Support clamp	2 1/2	-	-
165	U-bolt c/w plate	2 1/2	1/2 x 7	5 x 1 1/4
181	Spacer and strap	2 1/2	5/8 x 4 1/2	4 x 4
183	Spacer and strap	2 1/2	-	-
187	Spacer only	-	-	-
187-A	Adjustable spa	-	-	-



161 = 1 x 160 + 2 x P-934L



■ Meter spacers

Hot dip galvanized steel.

Code	Approx. weight (kg)
188	0.57



188

■ **Notes**

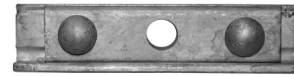
■ Messenger clamps

Hot dip galvanized steel.

Clamp P-38GC is supplied without any bolt and is used to support the messenger on short span. Clamps P-39GC, P-39CMC and P-8930 are supplied with two round head 1/2 track bolts and square nuts.

The P-39CMC features curved ends to prevent damage to the messenger stand when turning small angles.

The P-8930 is used for clamping messenger cables together when they cross each others at right angles.



P-39CMC



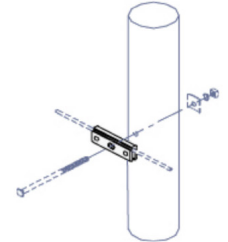
P-39GC



P-38GC



P-8930



Code	Type of clamp	Mounting hole (in)	Mounting bolt (in)	Length (in)	Wire diameter range (in)	Approx. weight (kg)
P-38GC	Suspension	11/16	5/8	2 1/2	1/4 to 7/16	0.30
P-39GC	Suspension	11/16	5/8	5 5/8	1/4 to 7/16	0.78
P-39CMC	Corner	11/16	5/8	5 3/4	1/4 to 7/16	0.95
P-8930	Crossover	-	-	3 1/4	1/4 to 7/16	0.70

■ Pole steps

Hot dip galvanized steel.

Permanent pole step P-10PS is 10 inches long and features fether drive threads on 2-3/4 inches and a flat driving surface.

The detachable pole step P-10DPS is 5-1/2 inches long when mounted, it is used with support

P-10DPS-SUP to provide a removable climbing step on wood pole. Two or more of these steps are used to assist linemen in gaining access to permanent step at higher level.

The support P-10DPS-SUP consist of two parts : the mounting plate and a special head lag screw (4 inches long). The head of the screw and the guide in the plate fit in the slot of the pole step and keep it from turning.

Code	Description	Dimension (in)
P-10PS	Pole step	5/8 x 10
P-10DPS	Detachable step	5 1/2
P-10DPS-SUP	Support	-



P-10PS

Drop wire attachments

P-2344444 is used to support one and two pair telephone drop wire at various drop attachments : span clamps, drive hooks, mast support,...

P-173DW (hook type) and 173 (eye type) are hot dip galvanized steel support to be mounted on steel mast and attached the bail of drop wire clamp.

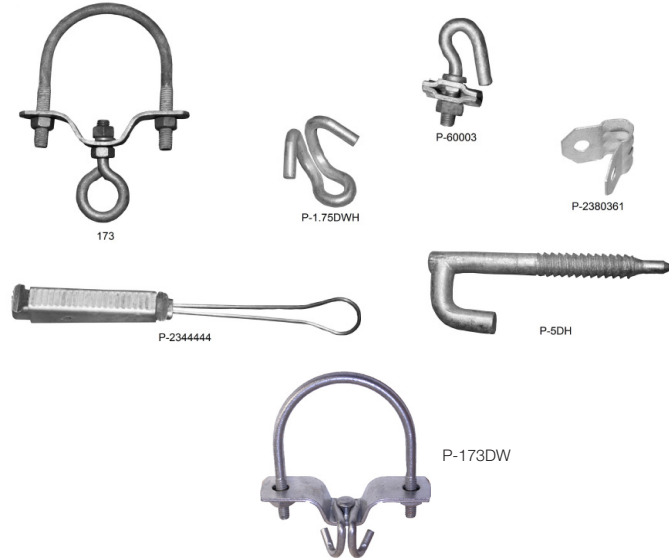
P-1.75DWH is used as an attachment to wood or masonry for bail of drop wire clamp.

P-5DH is hot dip galvanized steel drive hook. It is driven into a wooden pole to support a drop wire clamp and service drops.

P-600003 is used to attach the bail of a drop wire clamp to the messenger wire or for wrapping the support wire of drop cable.

P-2380361 is used to secure drop wire to wood or masonry with a #8 or #10 diameter screw.

Code	Mounting to	Attachment to wire
P-2344444	Solid Bail	Serrated shim
P-173DW	Mast	Hook
P-1.75DWH	Wall, pole	Hook
173	Mast	Eye
P-5DH	Pole	Hook
P-60003	Messenger	Hook
P-2380361	Wall, pole	Clip



Lashing wires

P-045LW is a coil of 1200 feet of stainless steel (type 430) lashing wire with diameter 0.045 inch. Lashing wire support and binds the signal carrying cable to the messenger cable.

P-60053 is a D type clamp in galvanized steel, it is used to attach the lashing wire to a messenger with diameter 1/4 to 7/16 inch.

Code	Description	Approx. weight (kg)
P-045LW	Lashing wire	2.86
P-60053	D type clamp	0.05



P-60053



P-045LW



*For more information,
please contact us*

ENERGY IS OUR JOB



SICAME GROUP

CICAME ENERGIE

5400 J.-A Bombardier
Saint-Hubert, J3Z1G8
Quebec, Canada

Tel : +1-450-679-7778
Fax : +1-450-679-9432

sales@cicame-energie.ca
www.cicame.ca

