

Compression tools

Presses & Dies



TABLE OF CONTENTS

- Hydraulic presses 12 tons	p 3
- Electrical press 12 tons	p 4
- Hydraulic press 60 tons – single-action	p 5
- Hydraulic press 60 tons – double-action	p6
- Hydraulic press 100 tons – « B » shape dies	p 7
- Hydraulic press 100 tons – Round dies	p 8
- Hydraulic press 100 tons – « H » shape dies	p 9
- Hydraulic press 200 tons	p 10
- Petrol hydraulic unit	p 11
- Power hydraulic unit	p 12
- Accessories and complete sets	p 13
- Types of dies available	p 14
- Dies - Distribution	p 15
- Dies - Transmission	p 16
- Go / NoGo – Distribution applications	p 17
- Go / NoGo - Transmission applications	p18
- Complementary services for compression tools	p 19

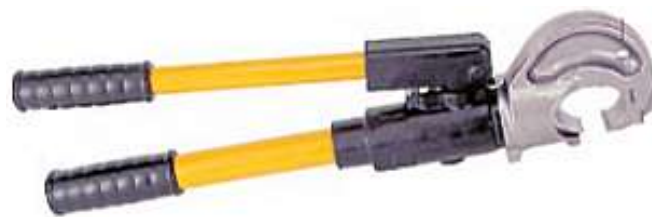
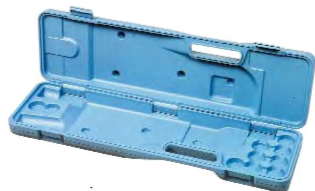
HYDRAULIC PRESSES 12T - DISTRIBUTION

Manual hydraulic press 12 T

- 2-gear pump
- automatic pressure release
- PVC insulated handles
- "C" shape head, rotating on 180°

Case for press HC 120 available upon request

Ref - CPHC 120



Reference	Force (kN)	Length (mm)	Weight (kg)
HC 120	120	585	6

Hydraulic compression head 12 T

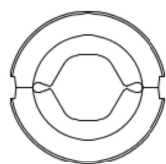
Manual hydraulic press, to be connected to 700 bars hydraulic pump (10 000 psi).

- fitted with a semi-coupler, type PIONNER-3/8
- "C" shape head, rotating on 180°
- delivered in a metallic case



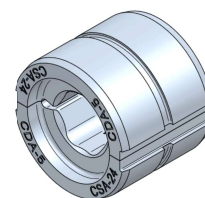
Reference	Force (kN)	Length (mm)	Weight (kg)
SC 120 KCM	120	185	3,8

Dies



Die code: use prefix CDA, CDS or CDU

Examples : CDA-7; CDS-85; CDU-4



For more information on dies with prefix CDA, CDS or CDU, please see pages **14 and 15**.

ELECTRICAL PRESS 12T - DISTRIBUTION

Electrical press 12 T

- 2-stage hydraulic pump (fast advance ram, time saving)
- motor cut out and automatic ram return after crimping
- manual ram return option
- nickel plated **head rotates through 180°**
- positive die locking system
- **ergonomic** cushion handle to ensure a positive grip for precise crimping. Built in **hand protection** for operator safety.
- **USB and computer interface** for control and data recovery



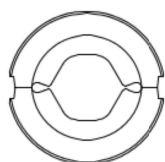
Reference	Force (kN)	Length (mm)	Width (mm)	Height (mm)	Weight (kg)
EC 1270	120	425	320	950	6,4



Components of the kit : Ref - EC1270KCM

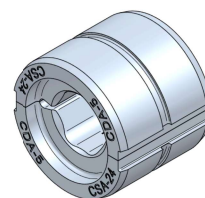
- main tools
- 2 Li-Ion batteries 14,4V
- battery charger
- metallic carrying case with soft foam protective liner
- CD-Rom software and USB cable connection
- user manual

Dies



Die code: use prefix CDA, CDS or CDU

Examples : CDA-7; CDS-85; CDU-4



HYDRAULIC PRESS 60T – DISTRIBUTION & TRANSMISSION

Hydraulic press 60T – single-action

The 60 T **portable** press is designed for both outdoor and indoor use to **compress connectors and electrical connectors using 60 tons round dies**.

- hydraulic pressure: 700 bar (10 000 psi)
- hoses must be certified for use with a 10 000 psi press minimum
- double handled for easy manipulation
- die locking by rotating the head
- can be supplied with an aluminum alloy support (option)
- delivered in a metallic case

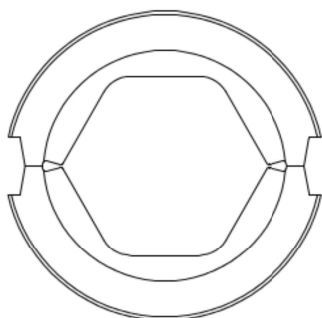


Reference	Pressure (psi)	Length (mm)	Width (mm)	Height (mm)	Weight (kg)
COMPR-140	10 000	450	260	260	22

Note :

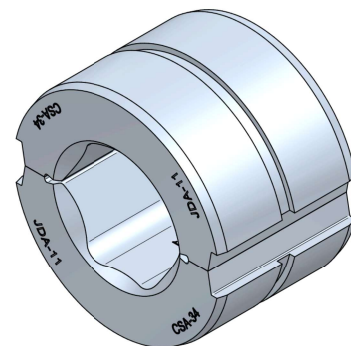
Fitted with a semi-coupler, type PIONNER-3/8

Dies



Die code: use prefix JDA, JDS or JDU

Examples : JDA-6; JDS-85; JDU-14



For more information on dies with prefix JDA, JDS or JDU, please see pages **14 and 15** for "**Distribution**" or **pages 14 and 16** for "**Transmission**"

HYDRAULIC PRESS 60T – DISTRIBUTION & TRANSMISSION

Hydraulic press 60T – double action

The 60 T **portable** press is designed for both outdoor and indoor use to **compress connectors and electrical joins using 60 tons round dies**.

- strength: 60,9 T
- hydraulic pressure: 700 bar (10 000 psi)
- hoses must be certified for use with a 10 000 psi press minimum
- double handled for easy manipulation
- die locking by rotating the head
- can be supplied with an aluminum alloy support (option)
- delivered in a metallic case



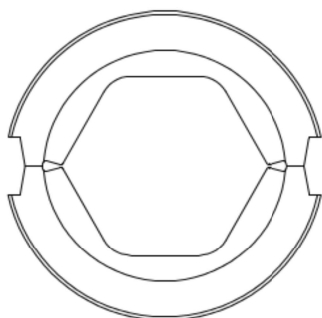
Reference	Pressure (psi)	Piston stroke (mm)	Length (mm)	Width (mm)	Height (mm)	Weight (kg)
COMPR-145	10 000	33	502	387	216	32,7

Note :

COMPR-145 is a double action press.

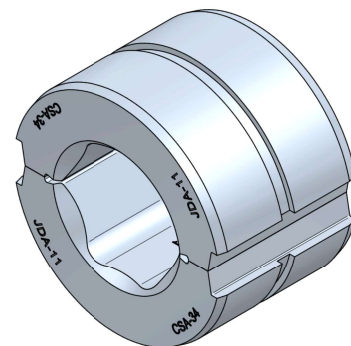
2 hoses COMPR-320 are necessary to use the COMPR-145 press (double action).

Dies



Die code: use prefix JDA, JDS or JDU

Examples : JDA-6; JDS-85; JDU-14



For more information on dies with prefix JDA, JDS or JDU, please see pages **14 and 15** for "**Distribution**" or **pages 14 and 16** for "**Transmission**"

HYDRAULIC PRESS 100T - TRANSMISSION

Hydraulic press 100T – double action

The 100 T hydraulic press is **fully recommended for overhead installations** thanks to its compact and light design.

- “B” shape, closed by rotating the head
- ram return when hydraulic pressure is inverted
- double handled for easy manipulation
- delivered in a wooden case
- hydraulic joins, type PIONNER 3/8



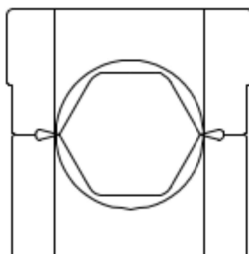
Reference	Force (kN)	Piston stroke (mm)	Recommended oil stock (cm ³)	Length (mm)	Weight (kg)
COMPR-156-2	980	22	315	364	314

Note :

COMPR-156-2 is a double action press.

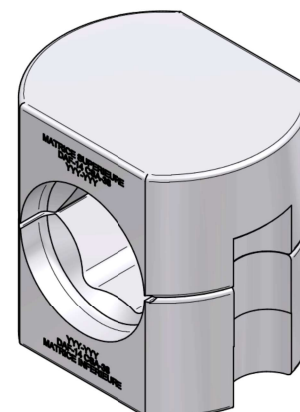
2 hoses COMPR-320 are necessary to use the COMPR-156-2 press (double action).

Dies



Die code: use prefix DAF ou DSF

Examples : DAF-11; DSF-9



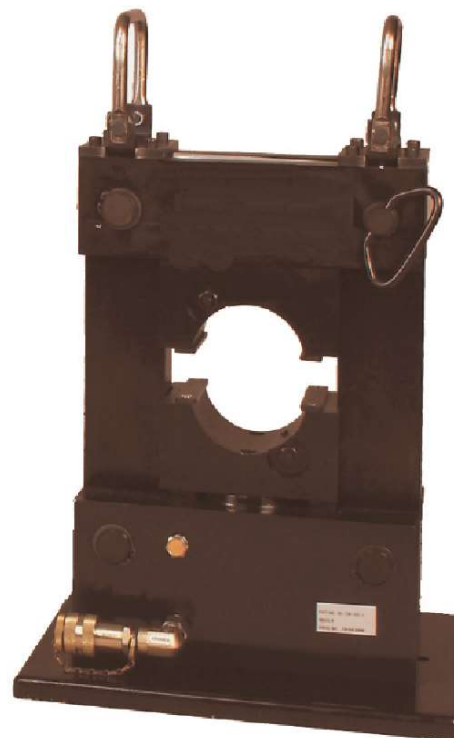
For more information on “B” shape dies, with prefix DAF or DSF, please see pages **14 and 16**.

HYDRAULIC PRESS 100T - TRANSMISSION

Hydraulic press 100T – double action

The 100 T **portable** press is designed for both outdoor and indoor use to **compress connectors and electrical joins using 100 tons round dies**.

- strength: 100 T
- hydraulic pressure: 10 200 psi
- pump needed: minimum 1 200cm³ oil stock + security valve to limit maximum pressure
- hoses must be certified for use with a 10 000 psi press minimum



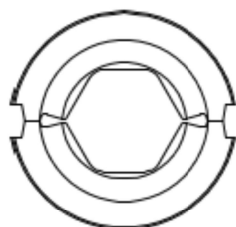
Reference	Tonnage (tons US)	Pressure (psi)	Length (mm)	Width (mm)	Height (mm)	Weight (kg)
COMPR-156-1	100	10 200	387	324	503	87,1

Note :

COMPR-156-1 is a double action press.

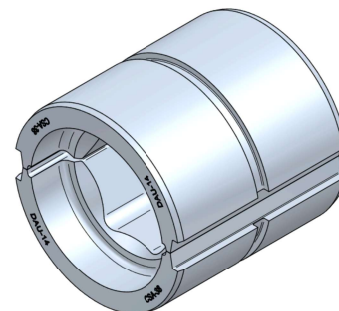
2 hoses COMPR-320 are necessary to use the COMPR-156-1 press (double action).

Dies



Die code: use prefix DAU or DSU

Examples : DAU-15; DSU-85



For more information on **round shape dies**, with prefix DAU or DSU, please see pages **14 and 16**.

HYDRAULIC PRESS 100T - TRANSMISSION

Hydraulic press 100T – double action

The 100 T **portable** press is designed for both outdoor and indoor use to **compress connectors and electrical joins using 100 tons “H” shape dies.**

- strength: 100 T
- hydraulic pressure: 10 200 psi
- pump needed: minimum 1 200cm³ oil stock + security valve to limit maximum pressure
- hoses must be certified for use with a 10 000 psi press minimum



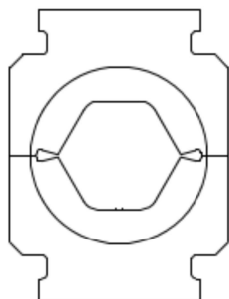
Reference	Tonnage (tons US)	Pressure (psi)	Length (mm)	Width (mm)	Height (mm)	Weight (kg)
COMPR-156	100	10200	387	324	503	87,1

Note :

COMPR-156 is a double action press.

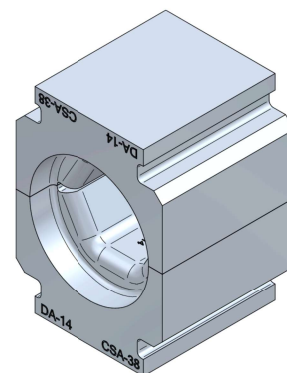
2 hoses COMPR-320 are necessary to use the COMPR-156 press (double action).

Dies



Die code: use prefix DA or DS

Examples : DA-17; DS-10



For more information on **“H” shape dies**, with prefix DA or DS, please see pages **14 and 16**.

HYDRAULIC PRESS 200T - TRANSMISSION

Hydraulic press 200T – double action

The 200 T **portable** press is designed for both outdoor and indoor use to **compress connectors and electrical joins using 200 tons round dies**.

- strength: 221,4 T
- hydraulic pressure: 10 000 psi
- hoses must be certified for use with a 10 000 psi press minimum
- die locking by rotating the head
- delivered in a wooden case



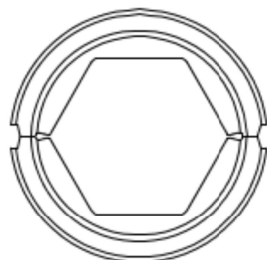
Reference	Tonnage (tons US)	Pressure (psi)	Length (mm)	Width (mm)	Height (mm)	Weight (kg)
COMPR-157	221,4	10 000	270	370	415	84

Note :

COMPR-157 is a double action press.

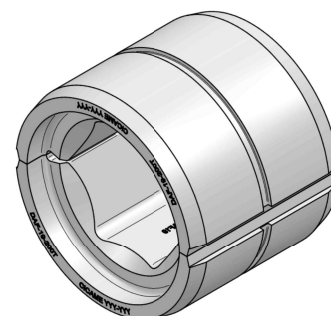
2 hoses COMPR-320 are necessary to use the COMPR-157 press (double action).

Dies



Die code: written as
DAF- - 200T or DSF- - 200T

Examples: DAF-20-200T; DSF-13-200T



For more information on dies with prefix DAF - - 200T or DSF - - 200T, please see pages **14 and 16**.

PETROL HYDRAULIC UNIT

COMPR-PTPG1203/CP

- Briggs & Stratton engine 6hp
- Valve for manual control
- 2-gear pump (fast forward)
- Safety valve for over pressure
- Protecting tubular frame
- To be used with single action presses



COMPR-PTPG1203/4SCP

- Honda engine type OHV 5,5hp
- Remote controlled with a 10 feet cable
- 2-gear pump (fast forward)
- Safety valve for over pressure
- Protecting tubular frame
- To be used with single or double action presses

Reference	Flow per minute	Tank size (gallon)	Useful oil (cm ³)	Length (cm)	Width (cm)	Height (cm)	Weight (kg)
COMPR-PTPG1203/CP	7860cm ³ at 100psi (fast forward) 2130cm ³ à 10 000psi	3	11500	55.2	50.1	62.2	70
COMPR-PTPG1203/4SCP	7860cm ³ at 100psi (fast forward) 2130cm ³ at 10 000psi	3	11500	55.2	50.1	62.2	70

POWER HYDRAULIC UNIT

COMPR-PTPE554

- Engine 1 1/8hp, 110/115 Volt, 50/60 Hz, 12 000rpm
- 4-position valve for manual control : Release / Forward / Hold / Return
- Remote controlled with a 10 feet cable
- Adaptable flow according to pressure to allow fast forward
- To be used with single or double action presses



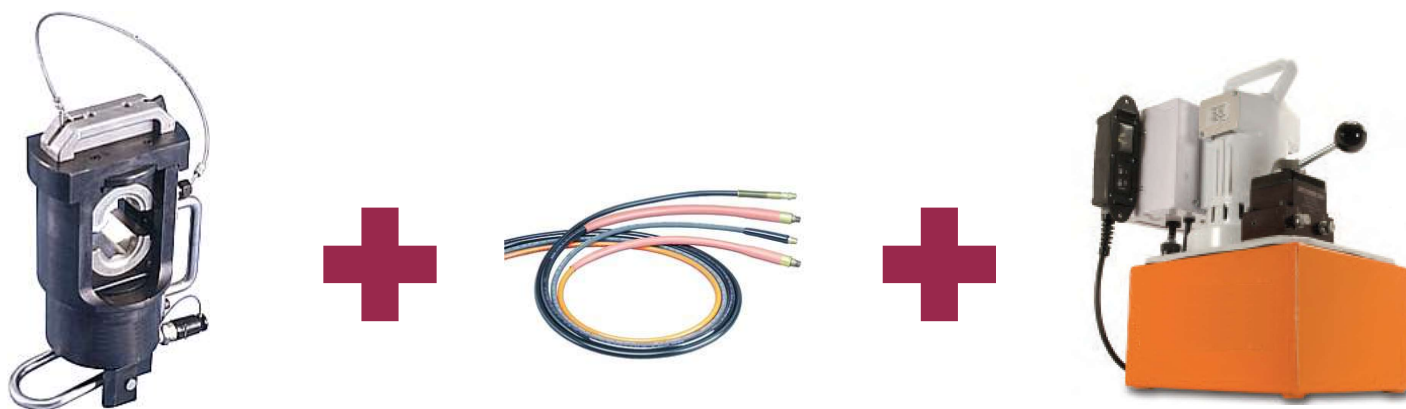
Reference	Flow per minute	Tank size (gallon)	Oil stock (cm ³)	Length (cm)	Width (cm)	Height (cm)	Weight (kg)
COMPR-PTPE554	7210 cm ³ /min at 700psi (fast forward) 918 cm ³ /min at 10 000psi	2,5	8600	35,6	24,1	46,4	30

ACCESSORIES AND COMPLETE SETS

KIT-COMPR...

Hydraulic hoses must be certified for use with a 10 000 psi press minimum.

We also propose complete sets composed of hydraulic press, hoses and hydraulic pump.



Reference	Description	Pressure (Psi)	Length (meter)
COMPR-320	15 feet hoses 10 000 psi - 1 male end and female end -	10 000	4,57

Reference	Description	Press reference	Tunnel reference	Pump reference
KIT-COMPR-140-ELE	Set for hydraulic press 60 tons single-action with hoses and power hydraulic unit	COMPR-140	COMPR-320 Quantity : 1	COMPR-PTPE554
KIT-COMPR-145-ELE	Set for hydraulic press 60 tons double action with hoses and power hydraulic unit	COMPR-145	COMPR-320 Quantity : 2	COMPR-PTPE554
KIT-COMPR-156-ELE*	Set for hydraulic press 100 tons double action with hoses and power hydraulic unit	COMPR-156*	COMPR-320 Quantity : 2	COMPR-PTPE554
KIT-COMPR-156-ESS*	KSet for hydraulic press 100 tons double action with hoses and petrol hydraulic unit	COMPR-156*	COMPR-320 Quantity : 2	COMPR-PTPG1203/4SCP
KIT-COMPR-157-ELE	Set for hydraulic press 200 tons double action with hoses and power hydraulic unit	COMPR-157	COMPR-320 Quantity : 2	COMPR-PTPE554
KIT-COMPR-157-ESS	Set for hydraulic press 200 tons double action with hoses and petrol hydraulic unit	COMPR-157	COMPR-320 Quantity : 2	COMPR-PTPG1203/4SCP

* also available with COMPR-156-1 and COMPR-156-2 presses

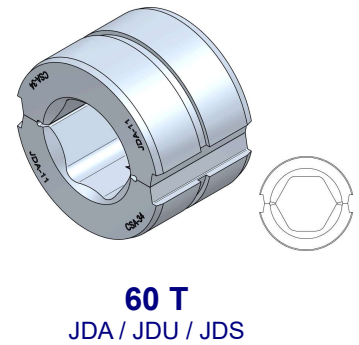
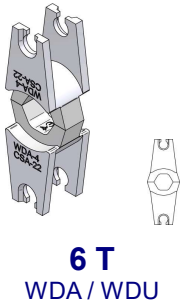
TYPES OF DIES AVAILABLE

Dies to compress aluminum, steel or copper connectors

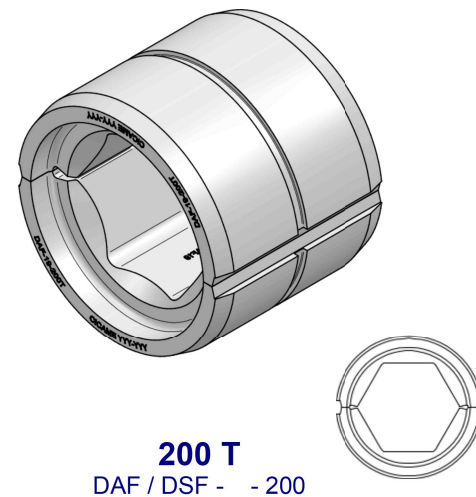
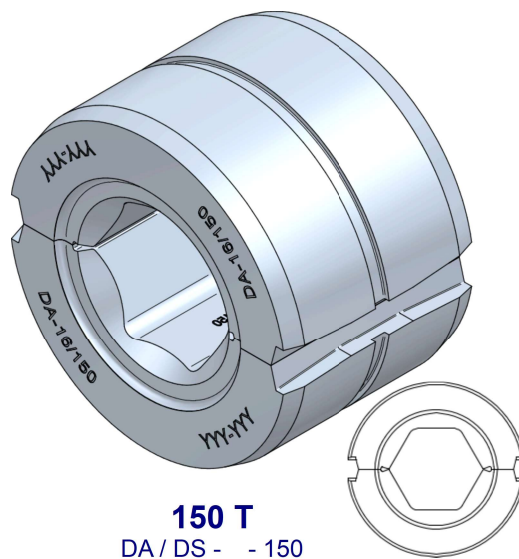
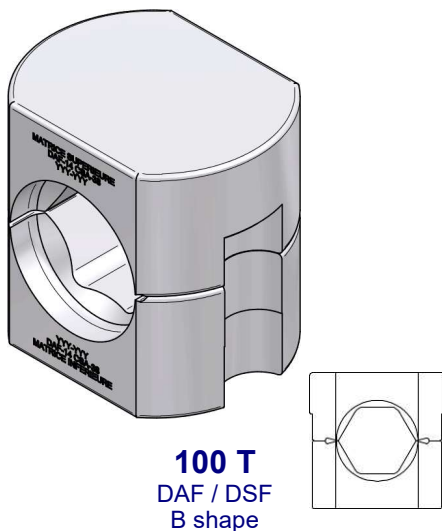
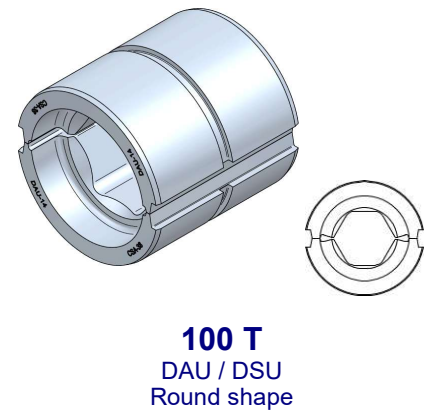
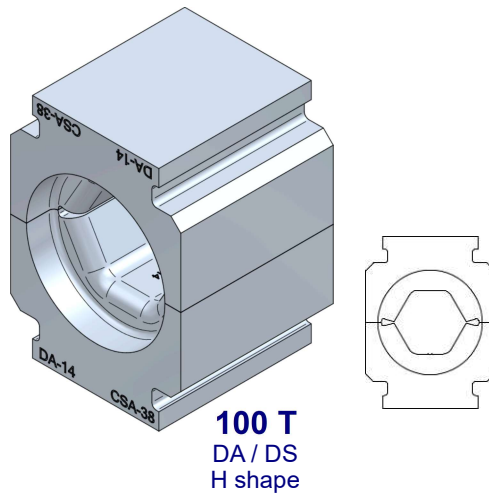
Cicame Energie dies have a hexagonal shape but we are able to manufacture other shape and models for you, upon request.

Our range is composed of dies according to the CSA C57 standard.

DISTRIBUTION

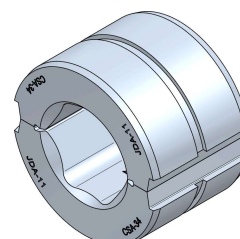
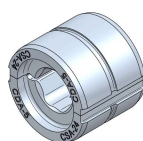


TRANSMISSION



DIES - DISTRIBUTION

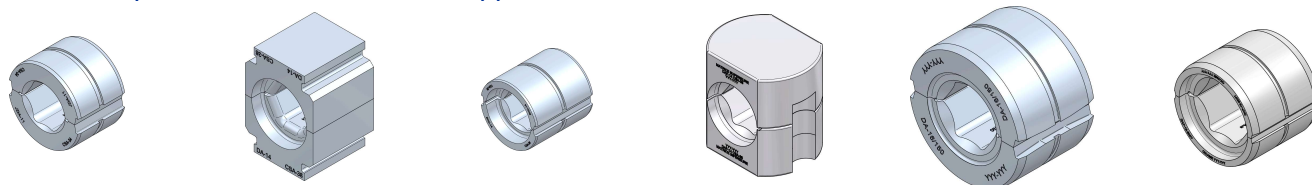
Dies to compress aluminum, steel or copper connectors - **DISTRIBUTION**



6 T Press			12 T Press			60 T Press			CSA	CICAME
Alu	Copper	Steel	Alu	Copper	Steel	Alu	Copper	Steel		
					CDS - 85			JDS - 85	1	S - 85
					CDS - 9			JDS - 9	2	S - 9
WDA - 3			CDA - 3						20	A-3
WDA - 4			CDA - 4			JDA - 4			22	A-4
WDA - 5			CDA - 5			JDA - 5			24	A-5
			CDA - 6			JDA - 6			26	A-6
			CDA - 7			JDA - 7			28	A-7
			CDA - 85			JDA - 85			30	A-85
						JDA - 10			32	A-10
						JDA - 11			34	A-11
						JDA - 12			36	A-12
						JDA - 13			-	A-13
						JDA - 14			38	A-14
	WDU - 3			CDU - 3					20 CU	U-3
	WDU - 4			CDU - 4			JDU - 4		22 CU	U-4
	WDU - 5			CDU - 5			JDU - 5		24 CU	U-5
				CDU - 6			JDU - 6		26 CU	U-6
				CDU - 7			JDU - 7		28 CU	U-7
				CDU - 85			JDU - 85		30 CU	U-85
							JDU - 10		32 CU	U-10
							JDU - 11		34 CU	U-11
							JDU - 12		36 CU	U-12
							JDU - 14		38 CU	U-14

DIES - TRANSMISSION

Dies to compress aluminum, steel or copper connectors - [TRANSMISSION](#)



60 T Press		100 T Press				150 T Press		200 T Press		CSA	CICAME		
Round shape		H shape		Round shape		B shape		Round shape					
Alu	Steel	Alu	Steel	Alu	Steel	Alu	Steel	Alu	Steel	Alu	Steel		
JDA-7		DA-7		DAU-7		DAF-7		DA-7-150				28	A-7
JDA-85		DA-85		DAU-85		DAF-85		DA-85-150				30	A-85
JDA-10		DA-10		DAU-10		DAF-10		DA-10-150				32	A-10
JDA-11		DA-11		DAU-11		DAF-11		DA-11-150				34	A-11
JDA-12		DA-12		DAU-12		DAF-12		DA-12-150				36	A-12
JDA-13		DA-13		DAU-13		DAF-13		DA-13-150		DAF-13-200		-	A-13
JDA-14		DA-14		DAU-14				DA-14-150		DAF-14-200		38	A-14
		DA-15		DAU-15				DA-15-150		DAF-15-200		-	A-15
		DA-16		DAU-16				DA-16-150		DAF-16-200		-	A-16
		DA-17		DAU-17				DA-17-150		DAF-17-200		-	A-17
		DA-18		DAU-18				DA-18-150		DAF-18-200		-	A-18
								DA-19-150		DAF-19-200		-	A-19
								DA-20-150		DAF-20-200		-	A-20
								DA-21-150		DAF-21-200		-	A-21
								DA-22-150		DAF-22-200		-	A-22
	JDS-85		DS-85		DSU-85		DSF-85		DS-85-150			1	S-85
	JDS-9		DS-9		DSU-9		DSF-9		DS-9-150			2	S-9
	JDS-10		DS-10		DSU-10		DSF-10		DS-10-150			-	S-10
	JDS-11		DS-11		DSU-11		DSF-11		DS-11-150			3	S-11
	JDS-12		DS-12		DSU-12			DS-12-150				-	S-12
	JDS-13		DS-13		DSU-13			DS-13-150		DSF-13-200		-	S-13
	JDS-14		DS-14		DSU-14			DS-14-150		DSF-14-200		-	S-14
			DS-15		DSU-15			DS-15-150		DSF-15-200		-	S-15
			DS-16		DSU-16			DS-16-150		DSF-16-200		-	S-16
			DS-17		DSU-17			DS-17-150		DSF-17-200		-	S-17
			DS-18		DSU-18			DS-18-150		DSF-18-200		-	S-18
								DS-19-150		DSF-19-200		-	S-19
								DS-20-150		DSF-20-200		-	S-20
								DS-21-150		DSF-21-200		-	S-21
								DS-22-150		DSF-22-200		-	S-22

GO / NOGO - DISTRIBUTION

Stainless-steel female calibers to control crimping dimensions

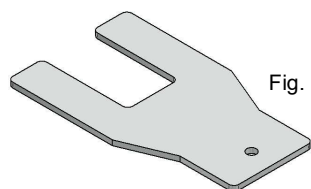


Fig. 1 – single Go/NoGo

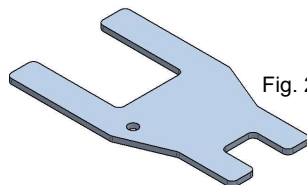


Fig. 2 – double Go/NoGo

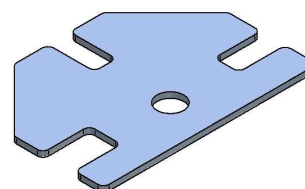


Fig. 3 – triple Go/NoGo

Reference	Type	Die Tonnage*	CSA Die Alu / Copper	Cicame Die Alu / Copper	CSA Die Steel	Cicame Die Steel
<u>To check aluminum / steel assemblies, 12 and 60 tons dies</u>						
GNG-06	Double Go/NoGo	12 tons	CSA-28	A-7	CSA-1	S-85
GNG-075		60 tons	CSA-30	A-85	CSA-2	S-9
<u>To check aluminum and copper connections, 12 and 60 tons dies</u>						
GNG-A-3	Single Go/NoGo	12 tons 60 tons	CSA-20 / CSA-20CU	A-3 / U-3		
GNG-A-4			CSA-22 / CSA-22CU	A-4 / U-4		
GNG-A-5			CSA-24 / CSA-24CU	A-5 / U-5		
GNG-A-6			CSA-26 / CSA-26CU	A-6 / U-6		
GNG-A-7			CSA-28 / CSA-28CU	A-7 / U-7		
GNG-A-85			CSA-30 / CSA-30CU	A-85 / U-85		
GNG-A-10			CSA-32 / CSA-32CU	A-10 / U-10		
GNG-A-11			CSA-34 / CSA-34CU	A-11 / U-11		
GNG-A-12			CSA-36 / CSA-36CU	A-12 / U-12		
GNG-A-14			CSA-38 / CSA-38CU	A-13 / U-13		
GNG-A-20-22-24			Triple Go/NoGo			
GNG-A-22-24-28	CSA-22 / CSA-22CU CSA-24 / CSA-24CU CSA-28 / CSA-28CU	A-4 / U-4 A-5 / U-5 A-7 / U-7				
GNG-A-26-28-30	CSA-26 / CSA-26CU CSA-28 / CSA-28CU CSA-30 / CSA-30CU	A-6 / U-6 A-7 / U-7 A-85 / U-85				
<u>To check aluminum and copper connections, 6 tons dies</u>						
GNG-A-3-6T	Single Go/NoGo	6 tons	CSA-20 / CSA-20CU	WDA-3 / WDU-3		
GNG-A-4-6T			CSA-22 / CSA-22CU	WDA-4 / WDU-4		
GNG-A-5-6T			CSA-24 / CSA-24CU	WDA-5 / WDU-5		
GNG-A-20-22-24-6T	Triple Go/NoGo		CSA-20 / CSA-20CU CSA-22 / CSA-22CU CSA-24 / CSA-24CU	WDA-3 / WDU-3 WDA-4 / WDU-4 WDA-5 / WDU-5		

* Cicame dies use prefix *WD* for 6 tons dies, *CD* for 12 tons dies and *JD* for 60 tons dies.

Examples: WDA-4, CDA-7, JDU-14

GO / NOGO - TRANSMISSION

Stainless-steel female calibers to control crimping dimensions

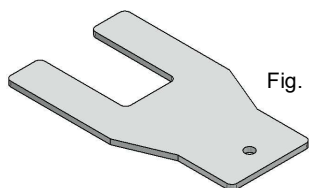


Fig. 1 – single Go/NoGo

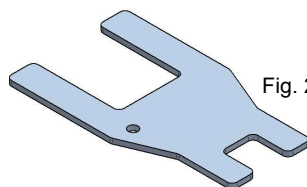


Fig. 2 – double Go/NoGo

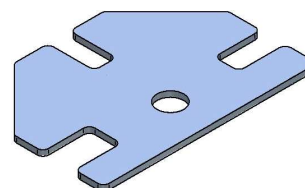


Fig. 3 – triple Go/NoGo

Reference	Type	Tonnage matrice	CSA die Aluminum	Cicame die Aluminum	CSA die Steel	Cicame die Steel
GNG-01	Double Go/NoGo	12 tons 60 tons 100 tons 150 tons 200 tons	-	A-2	CSA-1	S-85
GNG-02			CSA-20	A-3	CSA-2	S-9
GNG-03	Single Go/NoGo		CSA-22	A-4		
GNG-04	Double Go/NoGo		CSA-24	A-5	-	S-7
GNG-05			CSA-26	A-6	-	S-8
GNG-06			CSA-28	A-7	CSA-1	S-85
GNG-07			-	A-8	CSA-2	S-9
GNG-75			CSA-30	A-85	CSA-2	S-9
GNG-08			CSA-30	A-85	-	S-10
GNG-09			CSA-32	A-10	CSA-3	S-11
GNG-10			CSA-34	A-11	-	S-12
GNG-11			CSA-36	A-12	-	S-13
GNG-12			-	A-13	-	S-14
GNG-13			CSA-38	A-14	-	S-15
GNG-14			-	A-15	-	S-16
GNG-15			-	A-16	-	S-17
GNG-16			-	A-17	-	S-18
GNG-17			-	A-18	-	S-19
GNG-18			-	A-19	-	S-20
GNG-19			-	A-20	-	S-21
GNG-20			-	A-21	-	S-22
GNG-21	-	A-22	-	S-23		
GNG-KIT	Set GNG-01 to GNG-21		All	All	All	All

COMPLEMENTARY SERVICES FOR COMPRESSION TOOLS

Cicame Energie provides you the following services

Tools renting

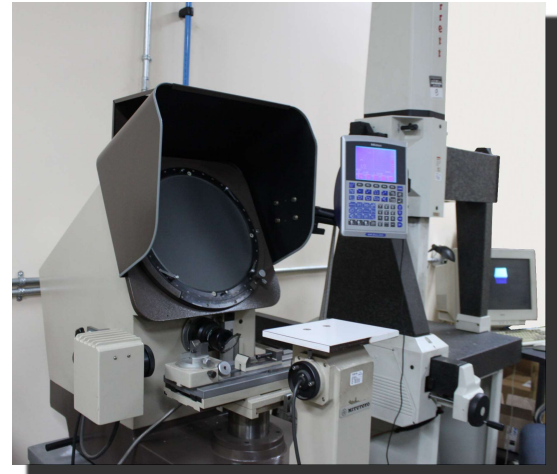
Press, pump or die renting

Calibration and reparation

- periodic checks of your dies (certificates issued)
- press calibration

Check and maintenance

Check and maintenance of your hydraulic equipments



BEST PRACTICES – CICAME RECOMMENDATIONS

We recommend the use of certified Cicame dies to compress steel and aluminum joints. If the last verification of your dies dates back from more than one year, we recommend you verify your dies prior to an installation of more than 25 dead-ends or/and 7 sleeves.

In any case, user is responsible for the frequency of its own die verification, depending on their usage.

We recommend you use Cicame dies along with Cicame Go/NoGo in order to insure complete closure during compression.

All steel parts (dead-ends and sleeves) must be checked right after compression to avoid the "spring break" effect. As for aluminum dead-ends, only the area crimped over the conductor is to be checked.





Please contact us for more information

ENERGY IS OUR JOB 

SICAME GROUPE

CICAME ENERGIE

5400 J.-A Bombardier
Saint-Hubert, J3Z1G8
Quebec, Canada

Tel : +1-450-679-7778
Fax : +1-450-679-9432

www.cicame.ca
sales@cicame-energie.ca

